

**MECHANICAL DEPARTMENT
FREIGHT CAR ACTIVE LISTING
BY CAR NUMBER
16-Feb-96 REVISED**

CAR SERIES	CAR TYPE	YEAR BUILT	CAPACITY	FLEET QUANTITY
2594, 2955, & 2956	FLAT	1959	50 TON	3
5570 & 5574	FLAT	1964	50 & 90 TON	2
7100 - 7199	BALLAST	1955	70 TON	64
9300 - 9328	TANK	1972, 1973, 1974	20000 GAL	28
10800 - 10899	INSU. BOX	1965	70 TON	25
10900 - 10949	BOX	1967	70 TON	48
12400 - 12424	BULKHEAD FLAT	1964	70 TON	19
12625 - 12699	FLAT	1964	70 TON	74
12700 - 12749	FLAT	1956	70 TON	39
12800 - 12899	FLAT (stakes)	1958	50 TON	88
12900 - 12999	FLAT (winches)	1976	70 TON	99
14100 & 14101	GRAIN HOPPER	1983	80 TON	2
14300 - 14349	HOPPER	1958	70 TON	26
14400 - 14449	HOPPER	1964	70 TON	50
14500 - 14509	COVERED HOPPER	1965	100 TON	10
14809	HOPPER	1952	70 TON	1
14900 - 14924	BALLAST	1953	70 TON	18
15104 - 15110	AIR DUMP	1934 & 1947	28, 30 YD.	6
15747 - 15782	AIR DUMP	1954 & 1958	40 YD	11
15800 - 15844	AIR DUMP	1992	50 YD.	27
16000 - 16076	HOPPER	1981	100 TON	70
16100-161180	HOPPER	1983	80 TON	64
16200 - 16253	HOPPER	1996	100 TON	53
17000 - 17014	TIE DOWN FLAT	1982	100 TON	15
18511 - 18520	COFC FLAT	1965	70 TON	10
19000 - 19013	RAMP FLATS	1955	62.5 TON	13
19025 - 19059	TOFC FLAT	1964	62.5 TON	7
19100 - 19144	TOFC FLAT	1985	180 TON	43

FREIGHT CAR SERIE 2954-2956 CAR TYPE FLAT

BUILT DATE(S) 1959 EMPTY WEIGHT 54,800

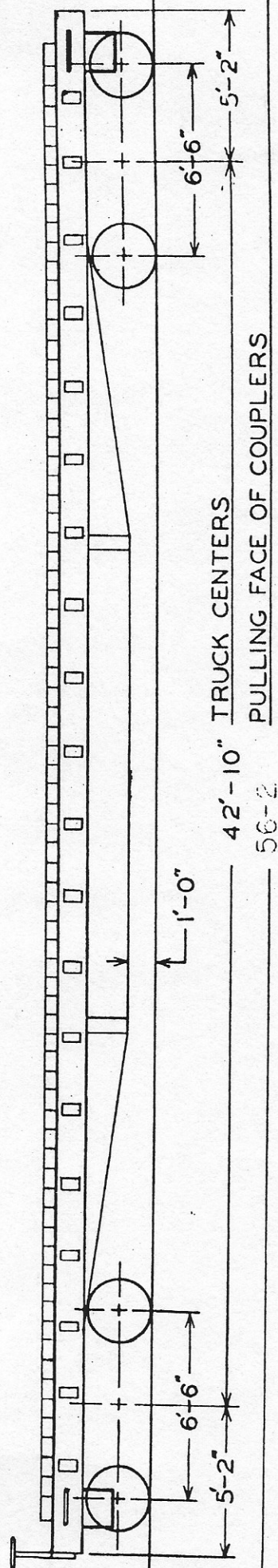
08-Feb-96

3 ACTIVE CARS

TYPE ARR CAR NUMBER BUILT DATE COMMENTS

F1A	2954	1959	
F1A	2955	1959	
F1A	2956	1959	

2950-2953 FLAT CARS



BUILT BY U.S. ARMY, LEASED
 DATE BUILT IN ABOVE ORDER 12-44, 11-47, 8-45, 2-45
 REBUILT BY NOV-1958
 PURCHASED FROM PASSENGER TYPE
 PLACED IN SERVICE 5 1/2" X 10"
 WHEELS 33 FRICTION
 TRUCKS STEEL
 AXLES AVERAGE, 54 800
 BEARINGS 100 000
 UNDERFRAME TYPE E
 LIGHTWEIGHT - LBS. SEE NOTE
 CAPACITY - LBS. SUPERIOR DROP SHAFT
 COUPLERS
 YOKES
 AIRBRAKES
 HANDBRAKES

GENERAL DIMENSIONS:
 TRAIN LENGTH 53'-2"
 LENGTH OVER STRIKERS 10'-8"
 LENGTH OF DECK 9'-9"
 MAX. WIDTH 5'-6"
 WIDTH OF DECK 3'-10"
 MAX. HEIGHT
 HEIGHT OF DECK
 NOTE: CARS ARE EQUIPPED WITH PASSENGER CAR AIRBRAKES.
 35457 U-22-BC
 35458 L-2A TRIPLE
 35459 U-12-ED
 35460 U-12-BC

CKD 2-23 RCV ALASKA RR

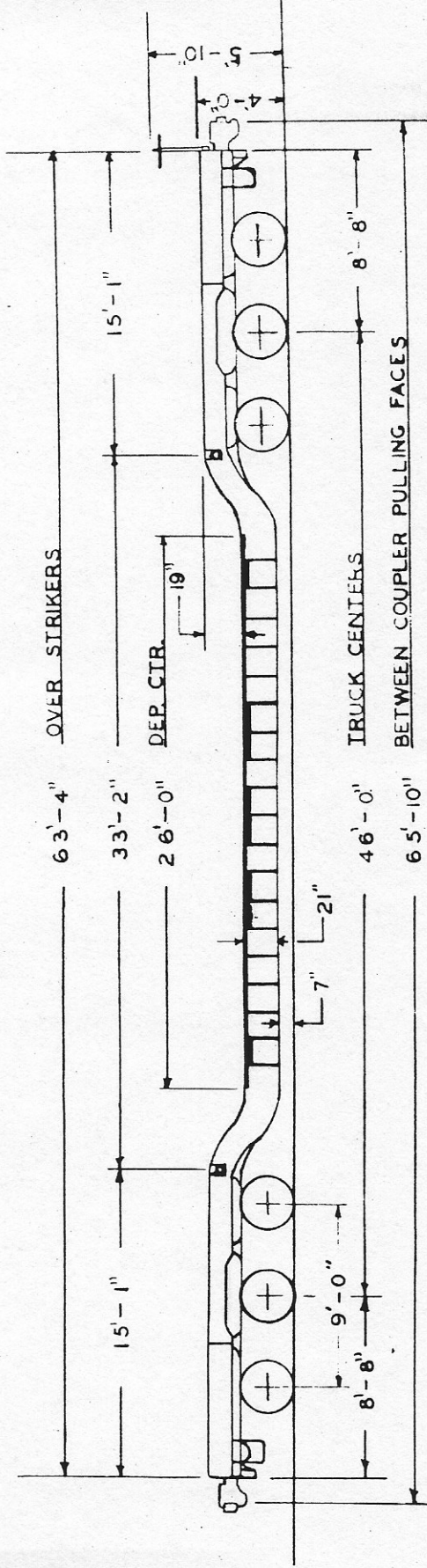
FREIGHT CAR SERIE 5570-5574 CAR TYPEDROP CEN

BUILT DATE(S) 1964 EMPTY WEIGHT 126,800

08-Feb-96

2 ACTIVE CARS

TYPE	ARR CAR NUMBER	BUILT DATE	COMMENTS
FS	5570	1964	
FS	5574	1964	



BUILT BY
 DATE BUILT
 PURCHASED FROM
 PLACED IN SERVICE
 WHEELS
 TRUCKS
 AXLES
 BEARINGS
 UNDERFRAME
 LIGHT WEIGHT-LBS.
 CAPACITY-LBS.
 COUPLERS
 YOKES
 AIRBRAKES
 HANDBRAKE

ALASKA RAILROAD
 1964
 1964
 30
 BUCKEYE
 6 1/2" X 12"
 TIMKEN 6 1/2" X 12"
 CAST STEEL
 126,800
 180,000
 TYPE E-60
 Y-40
 AB-10" X 12"
 SUPERIOR

GENERAL DIMENSIONS:
 TRAIN LENGTH
 MAX. HEIGHT
 MAX. WIDTH OF DEPRESSED CENTER

65'-10"
 5'-10"
 11'-0"

FREIGHT CAR SERIE 7100-7199 CAR TYPE BALLAST

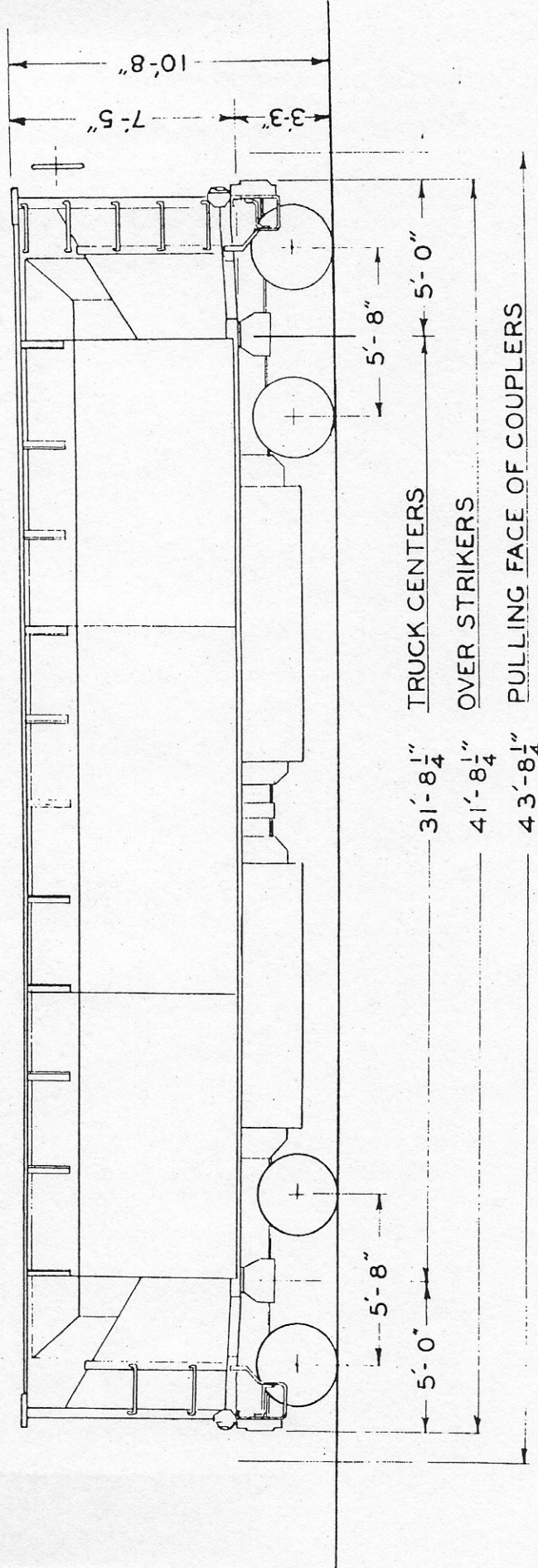
BUILT DATE(S) 1955 EMPTY WEIGHT 57,600

08-Feb-96 64 ACTIVE CARS

TYPE ARR CAR NUMBER BUILT DATE COMMENTS

H4	7100	1955	Open 70 ton
H4	7102	1955	Open 70 ton
H4	7103	1955	Open 70 ton
H4	7104	1955	Open 70 ton
H4	7106	1955	Open 70 ton
H4	7108	1955	Open 70 ton
H4	7110	1955	Open 70 ton
H4	7112	1955	Open 70 ton
H4	7114	1955	Open 70 ton
H4	7115	1955	Open 70 ton
H4	7116	1955	Open 70 ton
H4	7117	1955	Open 70 ton
H4	7118	1955	Open 70 ton
H4	7121	1955	Open 70 ton
H4	7123	1955	Open 70 ton
H4	7126	1955	Open 70 ton
H4	7127	1955	Open 70 ton
H4	7128	1955	Open 70 ton
H4	7130	1955	Open 70 ton
H4	7132	1955	Open 70 ton
H4	7133	1955	Open 70 ton
H4	7136	1955	Open 70 ton
H4	7137	1955	Open 70 ton
H4	7138	1955	Open 70 ton
H4	7139	1955	Open 70 ton
H4	7140	1955	Open 70 ton
H4	7141	1955	Open 70 ton
H4	7142	1955	Open 70 ton
H4	7143	1955	Open 70 ton
H4	7145	1955	Open 70 ton
H4	7146	1955	Open 70 ton
H4	7147	1955	Open 70 ton
H4	7148	1955	Open 70 ton
H4	7149	1955	Open 70 ton
H4	7150	1955	Open 70 ton
H4	7152	1955	Open 70 ton
H4	7154	1955	Open 70 ton
H4	7155	1955	Open 70 ton
H4	7159	1955	Open 70 ton
H4	7160	1955	Open 70 ton
H4	7161	1955	Open 70 ton
H4	7162	1955	Open 70 ton

7100-7199 BALLEST CARS



TRUCK CENTERS
OVER STRIKERS
PULLING FACE OF COUPLERS

31'-8 1/4"
41'-8 1/4"
43'-8 1/4"

BUILT BY
DATE BUILT
REBUILT BY
PURCHASED FROM
PLACED IN SERVICE
WHEEL DIAMETER
TRUCKS
AXLES
JOURNALS
UNDERFRAME
LIGHTWEIGHT - LBS.
CAPACITY
COUPLERS
YOKES
AIRBRAKES
HANDBRAKE

GREENVILLE STEEL CAR CO.
MAY, JUNE, JULY - 1955
G.S.C. CO.
1955
33'
BARBER S-2AO
6"x11"
TIMKEN ROLLER BEARING
STEEL
57600
70 TON, 2505 CU. FT.
E-60 - N.M.; S.C.CO.
Y-40 - N.M.; S.C.CO.
AB 10'x12" CYL.
POWER AJAX

GENERAL DIMENSIONS:
TRAIN LENGTH
MAX. HEIGHT
MAX. WIDTH OVER BULB ANGLES
INSIDE LENGTH
INSIDE WIDTH

43'-8 1/4"
10'-8"
10'-5"
40'-8"
10'-4"

DOORS

ENTERPRISE RAILWAY EQUIP. CO.
4 SIDE DUMP
4 CENTER DUMP

ALASKA RR

FREIGHT CAR SERIE 9300-9329

CAR TYPE 20,000 GAL. TANK

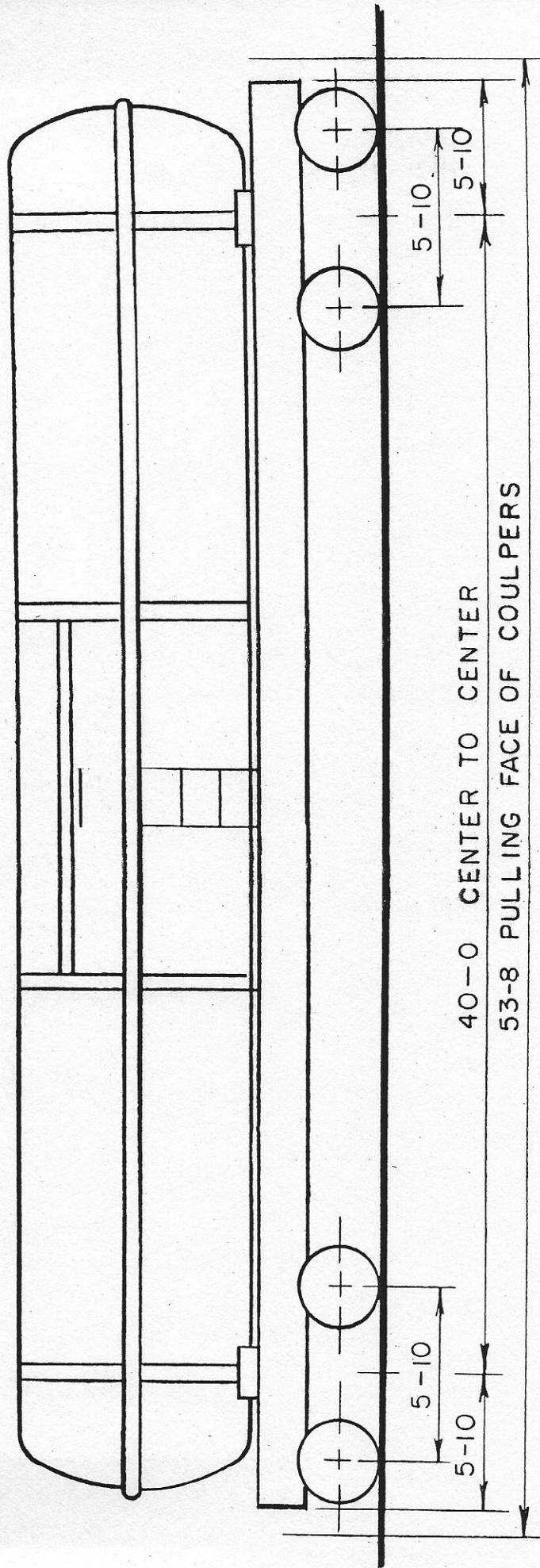
BUILT DATE(S) 1962 THRU EMPTY WEIGHT 66,400

08-Feb-96

29 ACTIVE CARS

TYPE	ARR CAR NUMBER	BUILT DATE	COMMENTS
T5P	9300	1969	
T5P	9301	1962	EQUIPPED WITH HEAD SHIELDS
T5P	9302	1962	
T5P	9303	1972	
T5P	9304	1972	
T5P	9305	1972	
T5P	9306	1973	
T5P	9307	1973	
T5P	9308	1973	
T5P	9309	1974	
T5P	9310	1974	
T5P	9311	1974	
T5P	9312	1974	
T5P	9313	1974	
T5P	9314	1974	
T5P	9315	1974	
T5P	9316	1974	
T5P	9317	1974	
T5P	9318	1974	
T5P	9319	1974	
T5P	9320	1974	
T5P	9321	1974	
T5P	9322	1974	
T5P	9323	1974	
T5P	9324	1974	
T5P	9325	1974	
T5P	9326	1974	
T5P	9327	1974	
T5P	9328	1969	

9300-9302 TANK CARS



BUILT BY	1962 & 1969	HANDBRAKES	POWER
DATES BUILT	1976	CAR LENGTH	53-8
REBUILT	33"	MAX. HEIGHT	14-2
PLACED IN SERVICE	BETTENDORF	MAX. WIDTH	10-10
WHEELS	6 1/2 x 12		
TRUCKS	ROLLER		
AXLE	RIGID		
BEARINGS	66,400		
UNDFRAME	20,000 GAL		
LIGHTWEIGHT	E-60		
CAPACITY	Y-40		
COUPLERS	AB		
YOKES	10 x 12		
AIRBRAKES			
			9301 EQUIPED WITH USABLE HEATER COILS

ALASKA RR

CK'D 2-83 RCK

FREIGHT CAR SERIE

10800-10834

CAR TYPEINSULATE

BUILT DATE(S)

1965

EMPTY WEIGHT 87,000

08-Feb-96

25 ACTIVE CARS

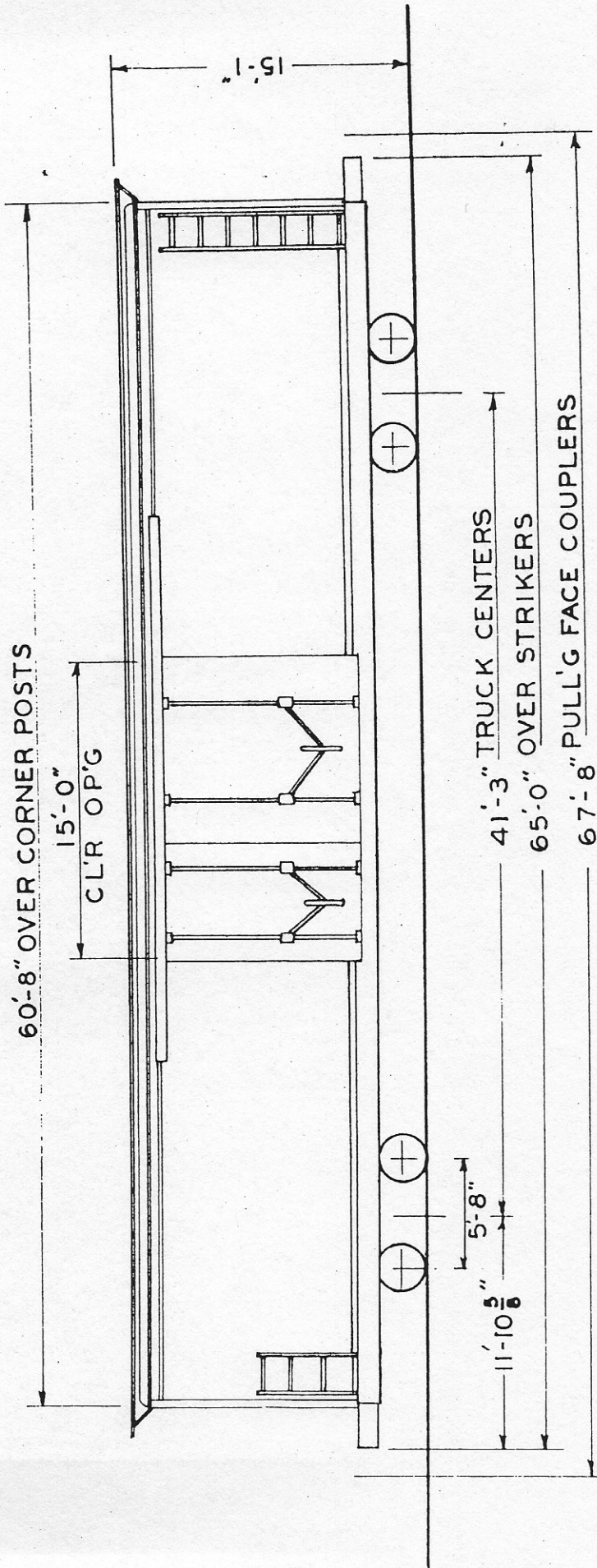
TYPE	ARR CAR NUMBER	BUILT DATE	COMMENTS
BI6	10801	1965	Insulated box 60' +
BI6	10803	1965	Insulated box 60' +
BI6	10804	1965	Insulated box 60' +(special)
BI6	10805	1965	Insulated box 60' +
BI6	10806	1965	Insulated box 60' +
BI6	10807	1965	Insulated box 60' +
BI6	10808	1965	Insulated box 60' +
BI6	10809	1965	Insulated box 60' +
BI6	10810	1965	Insulated box 60' +
BI6	10812	1965	Insulated box 60' +
BI6	10813	1965	Insulated box 60' +
BI6	10814	1965	Insulated box 60' +(special)
BI6	10815	1965	Insulated box 60' +
BI6	10817	1965	Insulated box 50' +
BI6	10819	1965	Insulated box 60' +
BI6	10821	1965	Insulated box 60' +
BI6	10822	1965	Insulated box 60' +
BI6	10823	1965	Insulated box 60' +
BI6	10825	1965	Insulated box 60' +
BI6	10826	1965	Insulated box 60' +(special)
BI6	10828	1965	Insulated box 60' +
BI6	10829	1965	Insulated box 60' +
BI6	10830	1965	Insulated box 60' +(special)
BI6	10831	1965	Insulated box 60' +
BI6	10834	1965	Insulated box 60' +

10800-10834 INSU. BOX

60'-8" OVER CORNER POSTS

15'-0" CLR OP'G

15'-1"



41'-3" TRUCK CENTERS

65'-0" OVER STRIKERS

67'-8" PULL'G FACE COUPLERS

BUILT BY & PURCHASED FROM

DATE BUILT

PLACED IN SERVICE

WHEELS

TRUCKS

JOURNALS

BEARINGS

COUPLERS

AIR BRAKES

HANDBRAKE

LT. WT. LBS.

CAPACITY

UNDERFRAME

LADING EQUIP.T

P.C.&F. CO.

1965

1965

33"

6"x11"

TIMKEN RB.

TYPEE

10"x12"ABD

AJAX NON-SPIN

87000

70 TON

5143 CU.FT.

KEYSTONE CUSHION

CAR-PAC

GENERAL DIMENSIONS:

MAX. HEIGHT

MAX. WIDTH

INSIDE LENGTH

INSIDE WIDTH

INSIDE HEIGHT

DOORS:

WIDTH CLEAR OPENING

HEIGHT CLEAR OPENING

HEATER UNIT - MODEL HKE-3 THERMO-KING

15'-1"

10'-7 3/4"

59'-3"

9'-2"

9'-5"

15'-0"

9'-4"

TRAINLINE WIRING - 4 WIRE 200 AMPS.

240 VOLT A.C.

CK'D 2-83 RCK

ALASKA RR

FREIGHT CAR SERIE 10900-10949

CAR TYPE

BOX

GREENBRIER LEASING NUMBER UNKNOWN

BUILT DATE(S)

1967

EMPTY WEIGHT

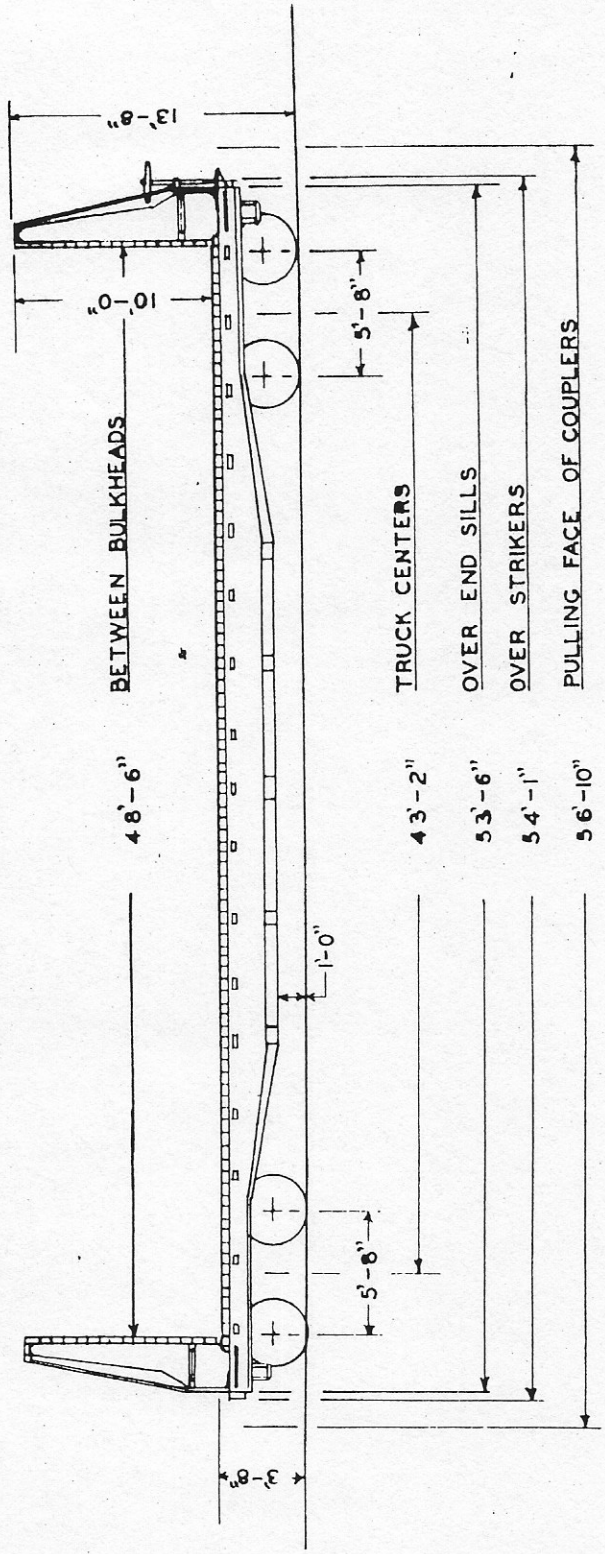
50,000 EST.

08-Feb-96

48 ACTIVE CARS

TYPE	ARR CAR NUMBER	BUILT DATE	COMMENTS
BB5	10900	1967	8 -12' single door 50'
BB5	10901	1967	8 -12' single door 50'
BB5	10902	1967	8 -12' single door 50'
BB5	10903	1967	8 -12' single door 50'
BB5	10904	1967	8 -12' single door 50'
BB5	10905	1967	8 -12' single door 50'
BB5	10907	1967	8 -12' single door 50'
BB5	10908	1967	8 -12' single door 50'
BB5	10909	1967	8 -12' single door 50'
BB5	10910	1967	8 -12' single door 50'
BB5	10911	1967	8 -12' single door 50'
BB5	10912	1967	8 -12' single door 50'
BB5	10913	1967	8 -12' single door 50'
BB5	10914	1967	8 -12' single door 50'
BB5	10915	1967	8 -12' single door 50'
BB5	10916	1967	8 -12' single door 50'
BB5	10917	1967	8 -12' single door 50'
BB5	10918	1967	8 -12' single door 50'
BB5	10919	1967	8 -12' single door 50'
BB5	10920	1967	8 -12' single door 50'
BB5	10921	1967	8 -12' single door 50'
BB5	10922	1967	8 -12' single door 50'
BB5	10923	1967	8 -12' single door 50'
BB5	10924	1967	8 -12' single door 50'
BB5	10925	1967	8 -12' single door 50'
BB5	10927	1967	8 -12' single door 50'
BB5	10928	1967	8 -12' single door 50'
BB5	10929	1967	8 -12' single door 50'
BB5	10930	1967	8 -12' single door 50'
BB5	10931	1967	8 -12' single door 50'
BB5	10932	1967	8 -12' single door 50'
BB5	10933	1967	8 -12' single door 50'
BB5	10934	1967	8 -12' single door 50'
BB5	10935	1967	8 -12' single door 50'
BB5	10936	1967	8 -12' single door 50'
BB5	10937	1967	8 -12' single door 50'
BB5	10938	1967	8 -12' single door 50'
BB5	10939	1967	8 -12' single door 50'
BB5	10940	1967	8 -12' single door 50'
BB5	10941	1967	8 -12' single door 50'
BB5	10942	1967	8 -12' single door 50'
BB5	10943	1967	8 -12' single door 50'
BB5	10944	1967	8 -12' single door 50'
BB5	10945	1967	8 -12' single door 50'
BB5	10946	1967	8 -12' single door 50'
BB5	10947	1967	8 -12' single door 50'
BB5	10948	1967	8 -12' single door 50'
BB5	10949	1967	8 -12' single door 50'

12400-12424 BULKHEAD FLAT CARS



BUILT BY GUNDERSON BROS. ENGINEERING CORP.
 DATE BUILT 1964
 REBUILT BY GUNDERSON BROS ENG'G CORP
 PURCHASED FROM 1964
 PLACED IN SERVICE 33
 WHEELS BARBER
 TRUCKS 6'X11"
 AXLES TIMKEN 6'X11"
 BEARINGS STEEL
 UNDERFRAME 62,800
 LIGHTWEIGHT - LBS. 140,000
 CAPACITY - LBS. TYPE BE-60A-HT
 COUPLERS Y-40
 YOKES AB 10"X12"
 AIRBRAKES EQUIPCO
 HANDBRAKE

GENERAL DIMENSIONS:
 TRAIN LENGTH 56'-10"
 MAX. HEIGHT 13'-8"
 MAX. WIDTH 10'-6"
 HEIGHT OF BULKHEAD FROM DECKING 10'-0"
 LENGTH BETWEEN BULKHEADS 48'-6"

CK'D 2-83 RCK ALASKA RR

FREIGHT CAR SERIE 12625-12699

CAR TYPE FLAT

BUILT DATE(S)

1964

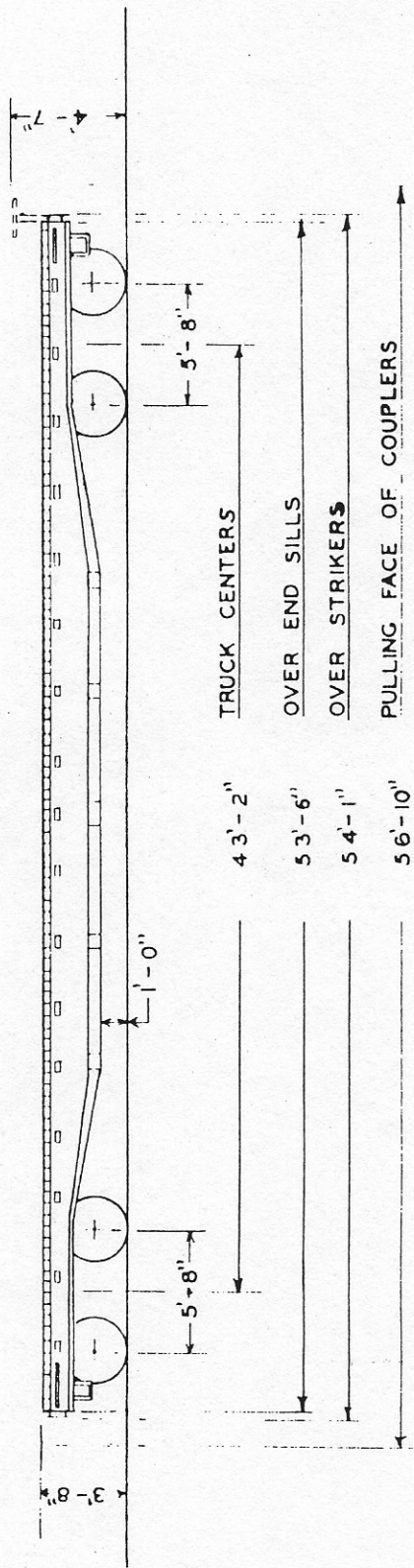
EMPTY WEIGHT 54,100

08-Feb-96

74 ACTIVE CARS

TYPE	ARR CAR NUMBER	BUILT DATE	SPECIAL EQUIPMENT
F5P	12625	1964	Pipe Flat
F5S	12626	1964	Long Stake
F5P	12627	1964	Pipe Flat
F5P	12628	1964	Pipe Flat
F5S	12629	1964	Long Stake
F5K	12630	1964	Log Bunk Flat
F5P	12631	1964	Pipe Flat
F5K	12632	1964	Log Bunk Flat
F5P	12633	1964	Pipe Flat
F5P	12634	1964	Pipe Flat
F5K	12635	1964	Log Bunk Flat
F5P	12636	1964	Pipe Flat
F5S	12637	1964	Long Stake
F5P	12638	1964	Pipe Flat
F5S	12639	1964	Long Stake
F5K	12640	1964	Log Bunk Flat
F5P	12641	1964	Pipe Flat
F5K	12642	1964	Log Bunk Flat
F5S	12643	1964	Long Stake
F5P	12644	1964	Pipe Flat
F5P	12645	1964	Pipe Flat
F5K	12646	1964	Log Bunk Flat
F5S	12647	1964	Long Stake
F5P	12648	1964	Pipe Flat
F5P	12649	1964	Pipe Flat
F5S	12650	1964	Long Stake
F5K	12651	1964	Log Bunk Flat
F5P	12652	1964	Pipe Flat
F5P	12653	1964	Pipe Flat
F5	12654	1964	Less than 50'
F5P	12655	1964	Pipe Flat
F5P	12656	1964	Pipe Flat
F5K	12657	1964	Log Bunk Flat
F5P	12658	1964	Pipe Flat
F5K	12659	1964	Log Bunk Flat
F5K	12660	1964	Log Bunk Flat
F5P	12661	1964	Pipe Flat
F5K	12662	1964	Log Bunk Flat
F5P	12663	1964	Pipe Flat
F5K	12664	1964	Log Bunk Flat
F5P	12665	1964	Pipe Flat
F5P	12666	1964	Pipe Flat

12625-12399 FLAT CARS



BUILT BY GUNDERSON BROS. ENGINEERING CORP.
 DATE BUILT 1964
 REBUILT BY
 PURCHASED FROM GUNDERSON BROS ENG'G CORP.
 PLACED IN SERVICE 1964
 WHEELS 33"
 TRUCKS BARBER
 AXLES 6"X11"
 BEARINGS TIMKEN 6"X11"
 UNDERFRAME STEEL
 LIGHTWEIGHT - LBS. 54,100
 CAPACITY - LBS. 140,000
 COUPLERS TYPE BE-60A-HT
 YOKES Y-40
 AIRBRAKES AB 10"X12"
 HANDBRAKE DROP SHAFT

GENERAL DIMENSIONS:
 TRAIN LENGTH 56'-10"
 MAX. HEIGHT 4'-7"
 MAX. WIDTH 10'-6"

CKD 2-83 RCK

ALASKA RR

FREIGHT CAR SERIES 12700-12749

CAR TYPE FLAT

BUILT DATE(S) 1956

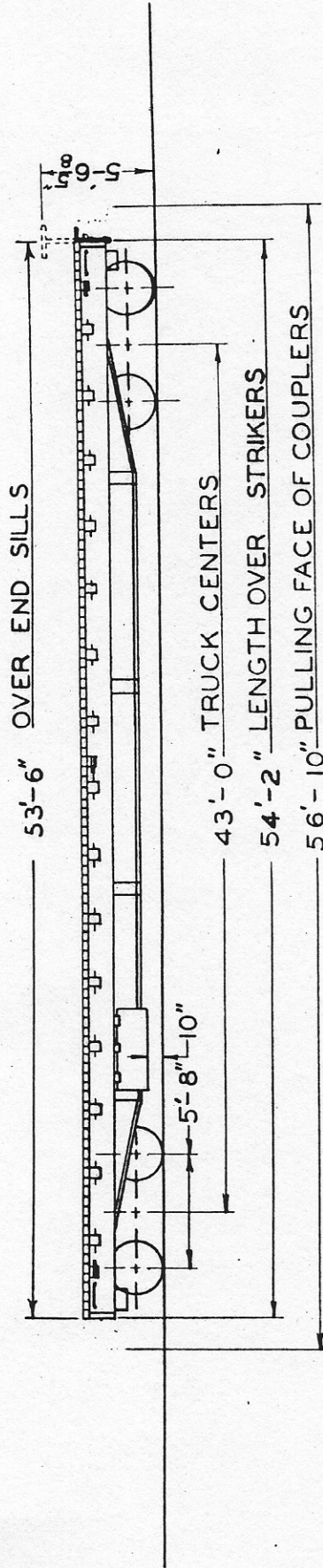
EMPTY WEIGHT 60,500

08-Feb-96

39 ACTIVE CARS

TYPE	ARR CAR NUMBER	BUILT DATE	SPECIAL EQUIPMENT
F5	12700	1956	less than 50'
F58	12701	1956	8x8's
F58	12702	1956	8x8's
F5	12703	1956	less than 50'
F5	12705	1956	less than 50'
F5	12706	1956	less than 50'
F5	12707	1956	Log Flat
F5	12708	1956	less than 50'
F58	12709	1956	8x8's
F58	12710	1956	8x8's
F58	12711	1956	8x8's
F58	12714	1956	8x8's
F58	12715	1956	8x8's
F5	12716	1956	less than 50'
F5	12717	1956	less than 50'
F5	12718	1956	less than 50'
F5	12721	1956	less than 50'
F58	12722	1956	8x8's
F5	12723	1956	less than 50'
F58	12725	1956	8x8's
F5	12726	1956	less than 50'
F5	12727	1956	less than 50'
F58	12728	1956	8x8's
F5	12729	1956	less than 50'
F5	12730	1956	less than 50'
F58	12731	1956	8x8's
F5	12732	1956	less than 50'
F58	12734	1956	8x8's
F58	12735	1956	8x8's
F5	12736	1956	less than 50'
F58	12738	1956	8x8's
F5	12739	1956	less than 50'
F5	12740	1956	less than 50'
F58	12741	1956	8x8's
F58	12742	1956	8x8's
F5	12743	1956	less than 50'
F5	12744	1956	less than 50'
F5S	12746	1956	Long Stake Flat
F5	12747	1956	less than 50'

12700-12713 FLAT CARS



BUILT BY
 DATE BUILT
 REBUILT BY
 PURCHASED FROM
 PLACED IN SERVICE
 WHEELS
 TRUCKS
 AXLES
 BEARINGS
 UNDERFRAME
 LIGHT WEIGHT - LBS.
 CAPACITY - LBS.
 COUPLERS
 YOKES
 AIRBRAKES
 HANDBRAKES

WARREN CAR CO.
 1956

WARREN CAR CO.
 1956 & 1957

BUCKEYE PEDESTAL TYPE
 33"
 6' x 11"

TIMKEN R.B.
 STEEL
 60500
 140000

TYPE, E RIGID SHANK BM. ROT. OP.
 VERTICAL W/ HORIZ. KEYS
 AB 10' x 12' CYL.
 SUPERIOR

GENERAL DIMENSIONS:

TRAIN LENGTH 56'-10"
 MAX. HEIGHT 5'-6 1/2"
 WIDTH OVER SIDE SILLS 9'-6 1/2"
 FROM RAIL TO TOP OF FLOOR 3'-9 3/8"
 MAX. WIDTH OVER STAKE POCKETS 10'-6"
 TRAINLINE JUMPER & CHOCK BLOCKS KEPT IN SPECIAL STORAGE COMPARTMENTS. 4 STEEL DECK PLATES FULL LENGTH OF CAR FOR PINNING CHOCK BLOCKS ELECTRICAL EQUIPMENT: TRAINLINE WIRING 4 WIRE 200 AMPS. 240 VOLTS A.C. 3 BRANCH LINE RECEPTACLES 3 WIRE 4 POLE 20 AMP, 240 VOLTS.

ALASKA RR

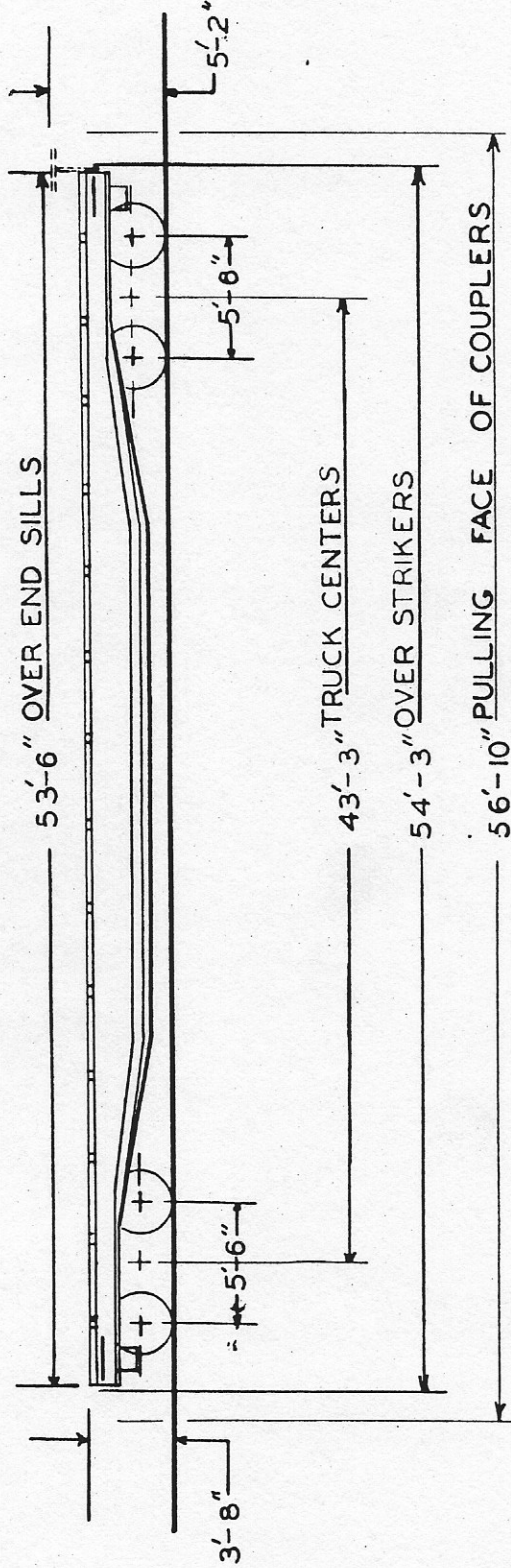
FREIGHT CAR SERIE 12800-12899 CAR TYPE FLAT

BUILT DATE(S) 1958 EMPTY WEIGHT 55,600

08-Feb-96 88 ACTIVE CARS

TYPE	ARR CAR NUMBER	BUILT DATE	Special Equipmen Used For:
F5S	12800	1958	Long Stake Flats Logs
F5S	12801	1958	Long Stake Flats
F5S	12802	1958	Long Stake Flats
F5S	12803	1958	Long Stake Flats
F5S	12804	1958	Long Stake Flats
F5S	12805	1958	Long Stake Flats
F5S	12806	1958	Long Stake Flats
F5S	12807	1958	Long Stake Flats
F5S	12808	1958	Long Stake Flats
F5S	12810	1958	Long Stake Flats
F5S	12811	1958	Long Stake Flats
F5S	12812	1958	Long Stake Flats
F5S	12813	1958	Long Stake Flats
F5S	12814	1958	Long Stake Flats
F5S	12816	1958	Long Stake Flats
F5S	12817	1958	Long Stake Flats
F5S	12818	1958	Long Stake Flats
F5S	12819	1958	Long Stake Flats
F5S	12820	1958	Long Stake Flats
F5S	12821	1958	Long Stake Flats
F5S	12823	1958	Long Stake Flats
F5S	12824	1958	Long Stake Flats
F5S	12825	1958	Long Stake Flats
F5S	12826	1958	Long Stake Flats
F5S	12827	1958	Long Stake Flats
F5S	12828	1958	Long Stake Flats
F5S	12829	1958	Long Stake Flats
F5S	12830	1958	Long Stake Flats
F5S	12831	1958	Long Stake Flats
F5S	12832	1958	Long Stake Flats
F5S	12833	1958	Long Stake Flats
F5S	12834	1958	Long Stake Flats
F5S	12835	1958	Long Stake Flats
F5S	12836	1958	Long Stake Flats
F5S	12837	1958	Long Stake Flats
F5S	12838	1958	Long Stake Flats
F5S	12839	1958	Long Stake Flats
F5S	12840	1958	Long Stake Flats
F5S	12841	1958	Long Stake Flats
F5S	12842	1958	Long Stake Flats
F5S	12843	1958	Long Stake Flats
F5S	12844	1958	Long Stake Flats

12800-12899 FLAT CARS
 2954 - 1956 FLAT CARS



BUILT BY
 DATE BUILT
 REBUILT BY
 PURCHASED FROM
 PLACED IN SERVICE
 WHEELS
 TRUCKS
 AXLES
 BEARINGS
 UNDERFRAME
 LIGHTWEIGHT - LBS.
 CAPACITY
 COUPLERS
 YOKES
 AIRBRAKES
 HANDBRAKES

THRALL CAR MFG. CO.
 1958-1959
 THRALL CAR MFG. CO.
 1958-1959
 TYPE S-2-A-0 BARBER UNIT
 33"
 5-1/2" X 10"
 TIMKEN R.B.
 STEEL
 55,600
 100,000
 TYPE E-60
 TYPE Y-40
 WESTINGHOUSE AB-1012
 DROP SHAFT SUPERIOR

GENERAL DIMENSIONS:
 TRAIN LENGTH
 MAX. HEIGHT
 MAX. WIDTH OVER DECK
 SPECIAL EQUIPMENT:
 8 STEEL DECK PLATES FOR PINNING
 CHOCK BLOCKS FOR 2 U.R.B.'S.

56'-10"
 5'-2"
 10'-6"

TRAINLINE WIRING, 4 WIRE 200 AMPS
 240 VOLTS A.C.
 3 BRANCH LINE RECEPTACLES 3 WIRE
 4 POLE 20 AMP 2-0 VOLTS.

ALASKA RR

FREIGHT CAR SERIE 12900-12999 CAR TYPE FLAT

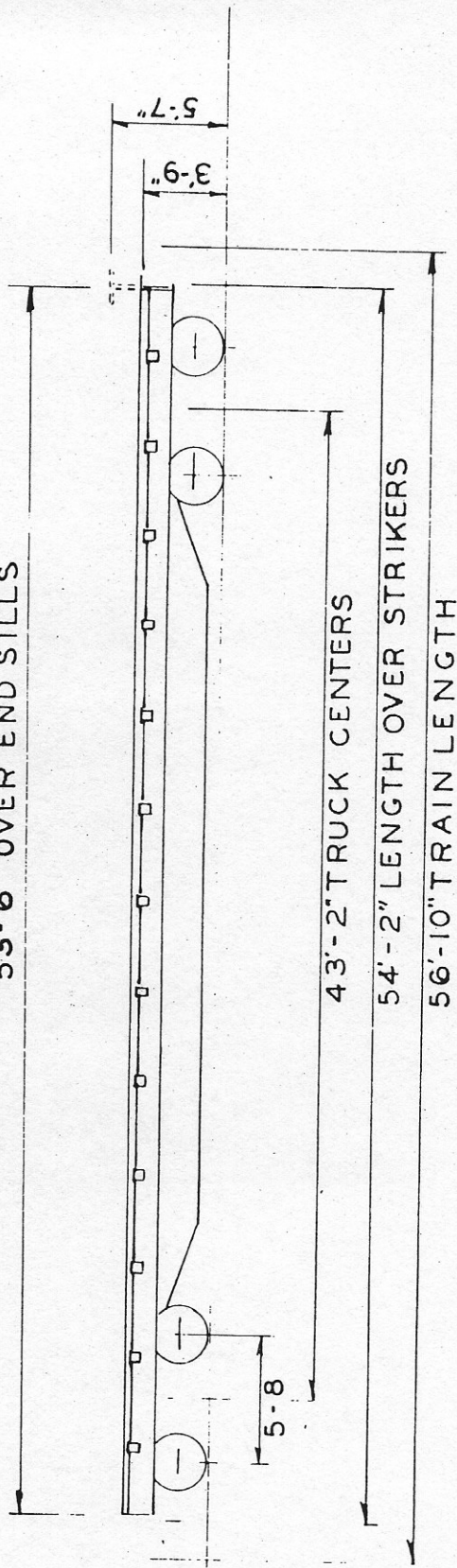
BUILT DATE(S) 1976 EMPTY WEIGHT 53,000

08-Feb-96 99 ACTIVE CARS

TYPE	ARR CAR NUMBER	BUILT DATE	Special Equipment Used For
F5	12900	1976	Side Winches ACT Less than 50'
F5	12901	1976	Side Winches ACT Less than 50'
F5	12902	1976	Side Winches ACT Less than 50' stakes to remove
F5	12903	1976	Side Winches ACT Less than 50'
F5	12904	1976	Side Winches ACT Less than 50'
F5	12905	1976	Side Winches ACT Less than 50' stakes to remove
F5	12906	1976	Side Winches ACT Less than 50'
F5	12907	1976	Side Winches ACT Less than 50'
F5	12908	1976	Side Winches ACT Less than 50'
F5	12909	1976	Side Winches ACT Less than 50'
F5	12910	1976	Side Winches ACT Less than 50'
F5	12911	1976	Side Winches ACT Less than 50'
F5	12912	1976	Side Winches ACT Less than 50'
F5	12913	1976	Side Winches ACT Less than 50'
F5	12914	1976	Side Winches ACT Less than 50'
F5	12915	1976	Side Winches ACT Less than 50'
F5	12916	1976	Side Winches ACT Less than 50'
F5	12917	1976	Side Winches ACT Less than 50'
F5	12918	1976	Side Winches ACT Less than 50'
F5	12919	1976	Side Winches ACT Less than 50'
F5	12920	1976	Side Winches ACT Less than 50'
F5	12921	1976	Side Winches ACT Less than 50'
F5	12922	1976	Side Winches ACT Less than 50'
F5	12923	1976	Side Winches ACT Less than 50'
F5	12924	1976	Side Winches ACT Less than 50' stakes to remove
F5	12925	1976	Side Winches ACT Less than 50'
F5	12926	1976	Side Winches ACT Less than 50'
F5	12927	1976	Side Winches ACT Less than 50'
F5	12928	1976	Side Winches ACT Less than 50'
F5	12929	1976	Side Winches ACT Less than 50'
F5	12930	1976	Side Winches ACT Less than 50'
F5	12931	1976	Side Winches ACT Less than 50'
F5	12932	1976	Side Winches ACT Less than 50'
F5	12933	1976	Side Winches ACT Less than 50'
F5	12934	1976	Side Winches ACT Less than 50'
F5	12935	1976	Side Winches ACT Less than 50'
F5	12936	1976	Side Winches ACT Less than 50'
F5	12937	1976	Side Winches ACT Less than 50'
F5	12938	1976	Side Winches ACT Less than 50'
F5	12939	1976	Side Winches ACT Less than 50'
F5	12940	1976	Side Winches ACT Less than 50'
F5	12941	1976	Side Winches ACT Less than 50' stakes to remove
F5	12942	1976	Side Winches ACT Less than 50'
F5	12943	1976	Side Winches ACT Less than 50'
F5	12944	1976	Side Winches ACT Less than 50'
F5	12945	1976	Side Winches ACT Less than 50'
F5	12946	1976	Side Winches ACT Less than 50'
F5	12947	1976	Side Winches ACT Less than 50'
F5	12948	1976	Side Winches ACT Less than 50' stakes to remove
F5	12949	1976	Side Winches ACT Less than 50'
F5	12950	1976	Side Winches ACT Less than 50' stakes to remove
F5	12951	1976	Side Winches ACT Less than 50'
F5	12952	1976	Side Winches ACT Less than 50'
F5	12953	1976	Side Winches ACT Less than 50'
F5	12954	1976	Side Winches ACT Less than 50'
F5	12955	1976	Side Winches ACT Less than 50'
F5	12956	1976	Side Winches ACT Less than 50'

12900-12999 FLAT CARS

53'-6" OVER END SILLS



BUILT BY
 DATE BUILT
 PURCHASED FROM
 PLACED IN SERVICE
 WHEELS
 TRUCKS
 AXLES
 BEARINGS
 LIGHT WEIGHT - LBS.
 CAPACITY - LBS.
 COUPLERS
 YOKES
 AIRBRAKES
 HANDBRAKES

SOUTHERN IRON & EQUIPMENT CO.
 1976
 S.I. & E.CO.
 1976
 33"
 6'x11"
 BRENCO
 53,000
 154,000
 NATIONAL
 NATIONAL

GENERAL DIMENSIONS:
 TRAIN LENGTH
 MAX. HEIGHT
 WIDTH OVER SIDE SILLS
 MAX. WIDTH
 RAIL TO FLOOR

56'-10"
 5'-7"
 9'-4"
 10'-6"
 3'-9"

CKD 2-83 RCK ALASKA RR

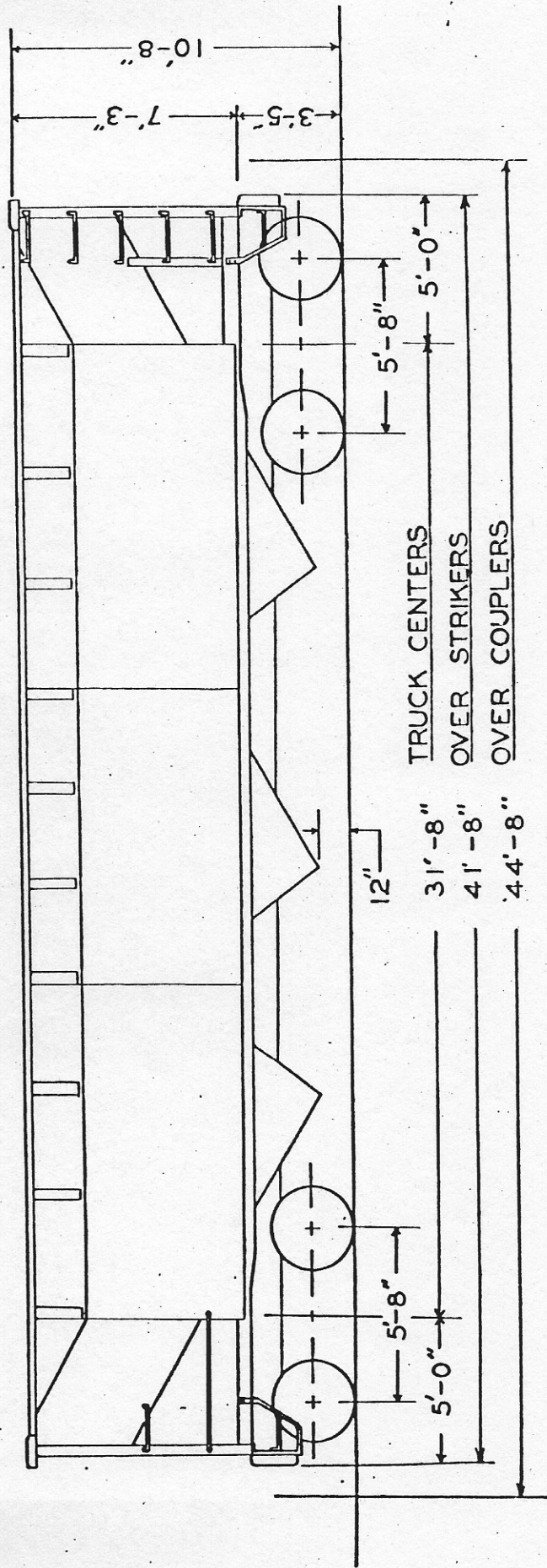
FREIGHT CAR SERIE 14100-14101 CAR TYPE HOPPER

BUILT DATE(S) EMPTY WEIGHT

08-Feb-96 2 ACTIVE CARS

TYPE	ARR CAR NUMBER	BUILT DATE	COMMENTS
HC5	14100	1983	covered 3900cf
HC5	14101	1983	covered 3900cf

HOPPER CARS
14300-14349



GENERAL DIMENSIONS:

TRAIN LENGTH 44'-8"
MAX. HEIGHT 10'-8"
MAX. WIDTH 10'-5"
INSIDE LENGTH 40'-8"
INSIDE WIDTH 10'-4"

GEN. AMERICAN TRANS. CORP.
MAY TO NOV. 1958

G. A. T. CORP.
MAY TO NOV. 1958

BARBER S-2-A
6"X11"

TIMKEN ROLLER BEARING
STEEL
49,600

70 TON 2773 CU.FT.
TYPE "E"
Y-40

AB-1012
UNIVERSAL

BUILT BY
DATE BUILT
REBUILT BY
PURCHASED FROM
PLACED IN SERVICE
WHEEL DIAMETER
TRUCKS
AXLES
JOURNALS
UNDERFRAME
LIGHTWEIGHT - LBS.
CAPACITY
COUPLERS
YOKES
AIRBRAKES
HANDBRAKE

ENTERPRISE RAILWAY EQUIP. CO
6 CENTER DUMP

DOORS

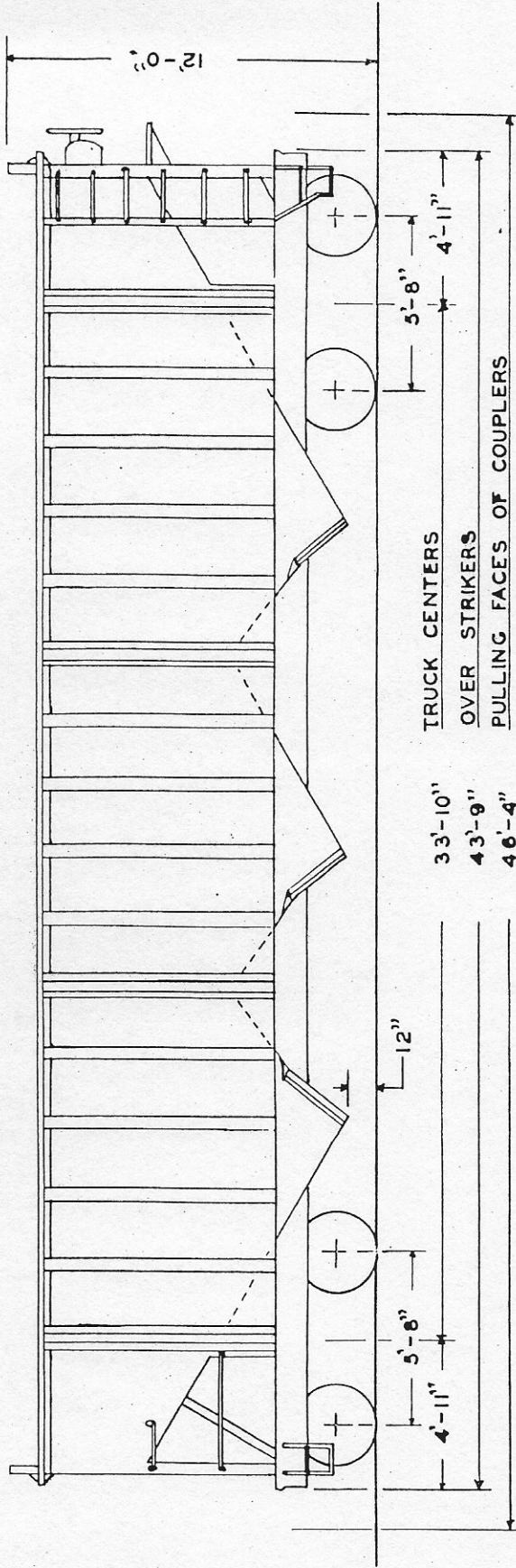
FREIGHT CAR SERIE 14400-14449 CAR TYPE HOPPER

BUILT DATE(S) 1964 EMPTY WEIGHT 53,800

08-Feb-96 50 ACTIVE CARS

TYPE	ARR CAR NUMBER	BUILT DATE	COMMENTS
H4	14400	1964	Open 70 ton
H4	14401	1964	Open 70 ton
H4	14402	1964	Open 70 ton
H4	14403	1964	Open 70 ton
H4	14404	1964	Open 70 ton
H4	14405	1964	Open 70 ton
H4	14406	1964	Open 70 ton
H4	14407	1964	Open 70 ton
H4	14408	1964	Open 70 ton
H4	14409	1964	Open 70 ton
H4	14410	1964	Open 70 ton
H4	14411	1964	Open 70 ton
H4	14412	1964	Open 70 ton
H4	14413	1964	Open 70 ton
H4	14414	1964	Open 70 ton
H4	14415	1964	Open 70 ton
H4	14416	1964	Open 70 ton
H4	14417	1964	Open 70 ton
H4	14418	1964	Open 70 ton
H4	14419	1964	Open 70 ton
H4	14420	1964	Open 70 ton
H4	14421	1964	Open 70 ton
H4	14422	1964	Open 70 ton
H4	14423	1964	Open 70 ton
H4	14424	1964	Open 70 ton
H4	14425	1964	Open 70 ton
H4	14426	1964	Open 70 ton
H4	14427	1964	Open 70 ton
H4	14428	1964	Open 70 ton
H4	14429	1964	Open 70 ton
H4	14430	1964	Open 70 ton
H4	14431	1964	Open 70 ton
H4	14432	1964	Open 70 ton
H4	14433	1964	Open 70 ton
H4	14434	1964	Open 70 ton
H4	14435	1964	Open 70 ton
H4	14436	1964	Open 70 ton
H4	14437	1964	Open 70 ton
H4	14438	1964	Open 70 ton
H4	14439	1964	Open 70 ton
H4	14440	1964	Open 70 ton
H4	14441	1964	Open 70 ton

HOPPER CARS 14400-14449



BUILT BY
 DATE BUILT
 REBUILT BY
 PURCHASED FROM
 PLACED IN SERVICE
 WHEELS
 TRUCKS
 AXLES
 BEARINGS
 UNDERFRAME
 LIGHTWEIGHT -LBS.
 CAPACITY
 LEVEL FULL
 10" HEAP
 COUPLERS
 YOKES
 AIRBRAKES
 HANDBRAKE

PULLMAN-STANDARD 1964
 PULLMAN-STANDARD 1964
 BETTENDORF TYPE 33"
 TIMKEN 6'X11"
 STEEL
 53,800
 80 TON
 2,960 CU. FT.
 3,300 CU. FT.
 E-60
 Y-40
 AB 10'X12"
 WHEEL TYPE

GENERAL DIMENSIONS:

TRAIN LENGTH 46'-4"
 MAX. HEIGHT 12'-0"
 MAX. WIDTH 10'-6"
 INSIDE LENGTH 42'-10"
 INSIDE WIDTH 9'-8"
 DOORS 6

FREIGHT CAR SERIE 14500-14509

CAR TYPE COVERED HOPPER

BUILT DATE(S)

1965

EMPTY WEIGHT

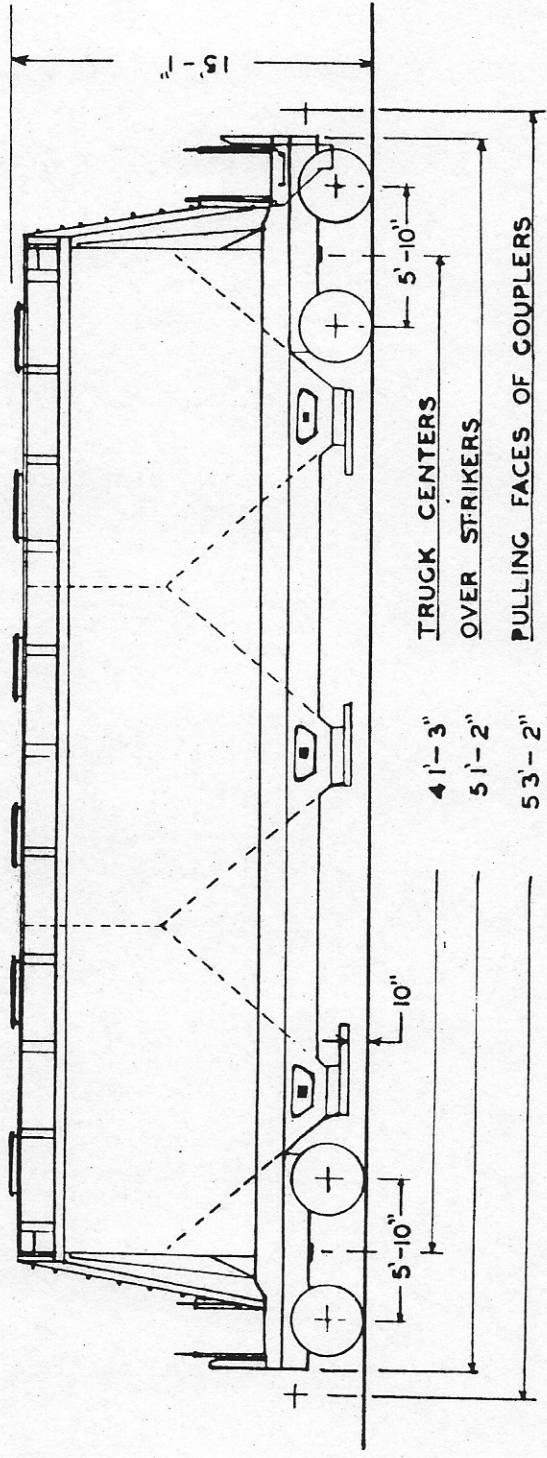
60,500

08-Feb-96

10 ACTIVE CARS

TYPE	ARR CAR NUMBER	BUILT DATE	COMMENTS
HC4	14500	1965	INTERGATED TRUCKS Covered2200-3099cf 70 to
HC4	14501	1965	INTERGATED TRUCKS Covered2200-3099cf 70 to
HC4	14502	1965	INTERGATED TRUCKS Covered2200-3099cf 70 to
HC4	14503	1965	INTERGATED TRUCKS Covered2200-3099cf 70 to
HC4	14504	1965	INTERGATED TRUCKS Covered2200-3099cf 70 to
HC4	14505	1965	INTERGATED TRUCKS Covered2200-3099cf 70 to
HC4	14506	1965	INTERGATED TRUCKS Covered2200-3099cf 70 to
HC4	14507	1965	INTERGATED TRUCKS Covered2200-3099cf 70 to
HC4	14508	1965	INTERGATED TRUCKS Covered2200-3099cf 70 to
HC4	14509	1965	INTERGATED TRUCKS Covered2200-3099cf 70 to

14500-14509 COVERED HOPPERS



BUILT BY
 DATE BUILT
 REBUILT BY
 PURCHASED FROM
 PLACED IN SERVICE
 WHEELS
 TRUCKS
 AXLES
 BEARINGS
 UNDERFRAME
 LIGHT WEIGHT LBS.
 CAPACITY
 COUPLERS
 HOOKS
 AIR BRAKE
 HAND BRAKE

AMERICAN CAR & FOUNDRY INC.
 1965
 A.C. & F. INC.
 1965
 36"
 A.C. & F.
 6 1/2 X 12"
 TIMKEN ROLLER 6 1/2 X 12"
 STEEL
 60,500
 100 TON 3500 CU. FT.
 B-E60A-HT
 BY-40
 B-8-1/2 WAB COPAC
 VERTICAL WHEEL

GENERAL DIMENSIONS:
 TRAIN LENGTH
 MAX. HEIGHT
 MAX. WIDTH
 INSIDE LENGTH
 INSIDE WIDTH
 HOPPER DOORS
 NO.
 LOADING HATCHES
 DIA.

53'-2"
 15'-1"
 10'-8"
 41'-3"
 10'-8"
 13" X 24"
 3
 6
 30"

CK'D 2-83 RCK

ALASKA

FREIGHT CAR SERIES

14600-14609

CAR TYPE

COVERED HOPPER

BUILT DATE(S)

1965

EMPTY WEIGHT

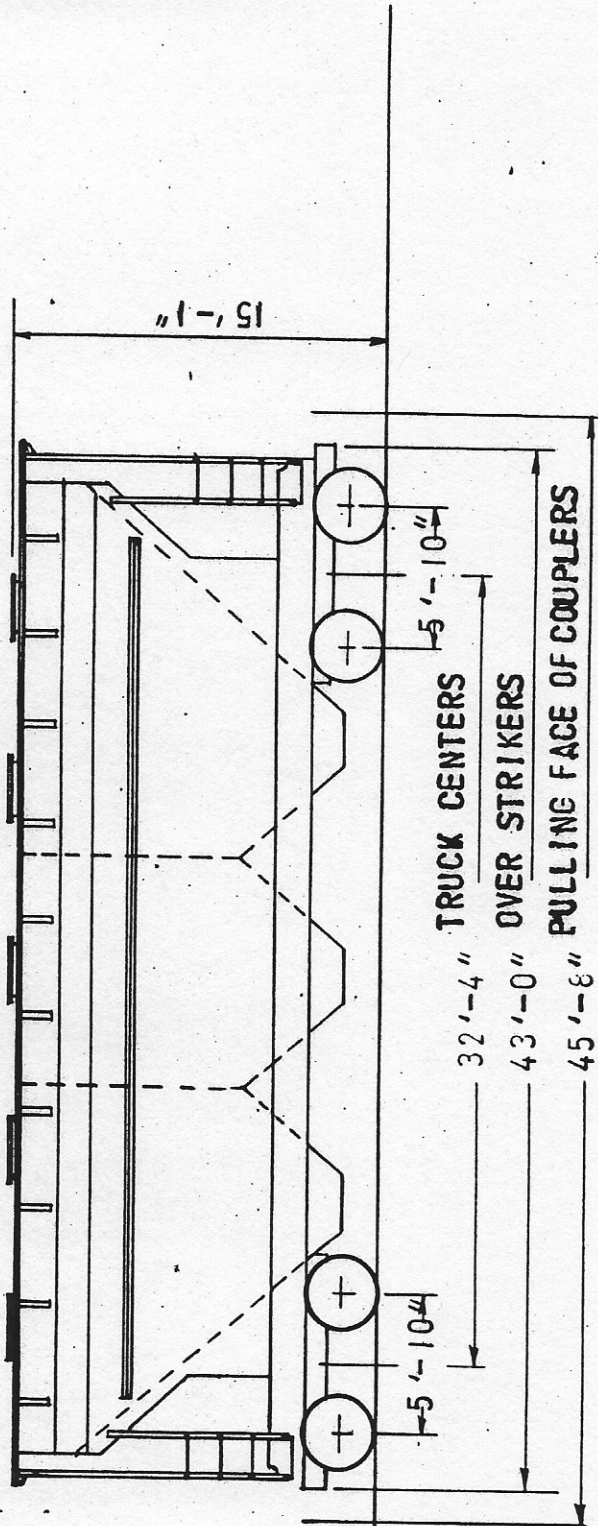
60,000

08-Feb-96

9 ACTIVE CARS

TYPE	ARR CAR NUMBER	BUILT DATE	COMMENTS
HC4	14600 (leased GNRR)	1965	INTERGATED TRUCKS Covered 2200-3099cf 70 ton
HC4	14602 (leased GNRR)	1965	INTERGATED TRUCKS Covered 2200-3099cf 70 ton
HC4	14603 (leased GNRR)	1965	INTERGATED TRUCKS Covered 2200-3099cf 70 ton
HC4	14604 (leased GNRR)	1965	INTERGATED TRUCKS Covered 2200-3099cf 70 ton
HC4	14605 (leased GNRR)	1965	INTERGATED TRUCKS Covered 2200-3099cf 70 ton
HC4	14606 (leased GNRR)	1965	INTERGATED TRUCKS Covered 2200-3099cf 70 ton
HC4	14607 (leased GNRR)	1965	INTERGATED TRUCKS Covered 2200-3099cf 70 ton
HC4	14608 (leased GNRR)	1965	INTERGATED TRUCKS Covered 2200-3099cf 70 ton
HC4	14609 (leased GNRR)	1965	INTERGATED TRUCKS Covered 2200-3099cf 70 ton

14600-14609 COVERED HOPPERS



BUILT BY AMERICAN CAR & FOUNDRY, INC.
DATE BUILT 1970
PURCHASED FROM A.C.&F. INC.
PLACED IN SERVICE 1970
WHEELS 36"
TRUCKS ASF A-3 RIDE CONTROL
BEARINGS TIMKEN 6 1/2" X 12"
LIGHT WEIGHT, LBS. 60,000
CAPACITY 100 TON 3560 CU. FT.
COUPLERS A.S.F. TYPE E (BE-60B-HT)
YOKES A.S.F. 68173-Q
DRAFTGEAR W.H. MINOR (RF361)
AIRBRAKES ABI 1012
HANDBRAKE ELLCO-NAT'L D-1600Q

GENERAL DIMENSIONS:

TRAIN LENGTH 45'-8"
MAX. HEIGHT 15'-1"
MAX. WIDTH 10'-8"
INSIDE LENGTH 39'-8"
INSIDE WIDTH 10'-7"

HOPPER DOORS 3
LOADING HATCHES 5
DIAMETER 30"

CENTER OF GRAVITY (FULLY LOADED CAR) 94"

CK'D 2-83 RCK

ALASKA RR

FREIGHT CAR SERIE 14800-14811

CAR TYPE

HOPPER

BUILT DATE(S)

1952

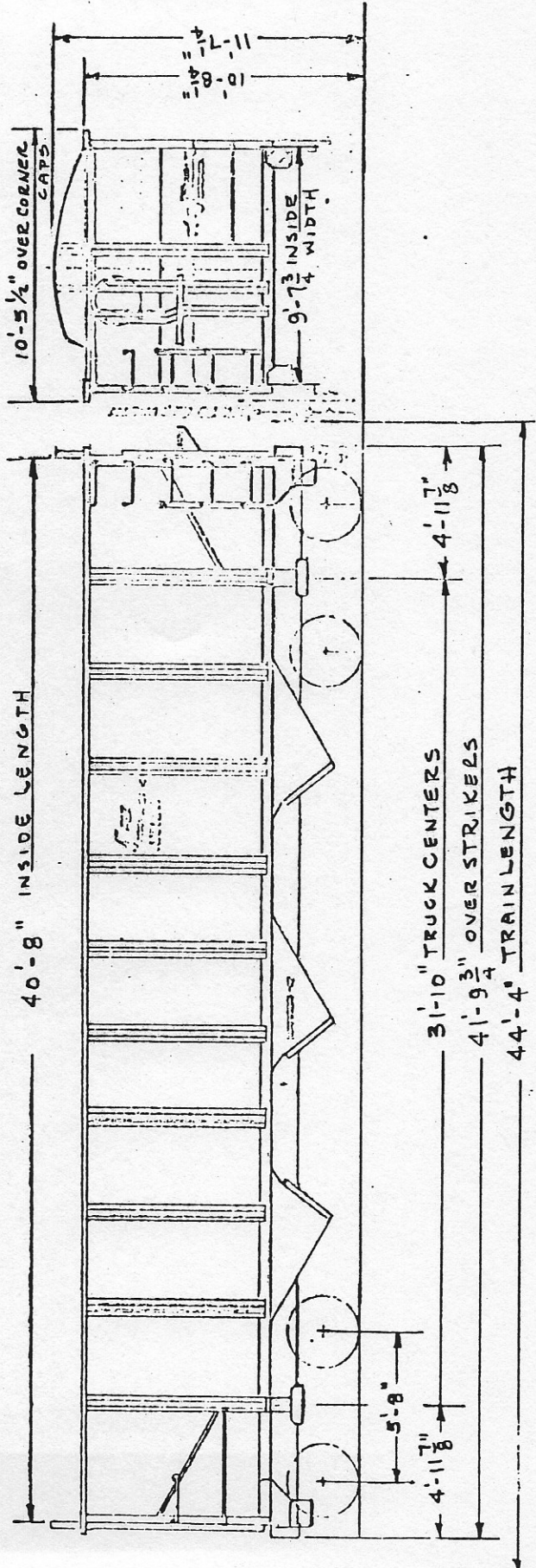
EMPTY WEIGHT

48,900

08-Feb-96

1 ACTIVE CARS

TYPE	ARR CAR NUMBER	BUILT DATE	COMMENTS	WEIGH DATE
H4	14809	1952	Open 70 ton	



BUILT BY: BETHLEHEM STEEL
 DATE BUILT: 1952
 RECONDITIONED BY: GARRETT RAILROAD CAR & EQUIP., INC.
 PURCHASED FROM: GARRETT RAILROAD CAR & EQUIP., INC.
 PLACED IN SERVICE: 1976
 WHEEL DIA.: 33"
 TRUCKS: 6" x 11" ROLLER BEARINGS
 JOJRNALS: 48,900
 LT. WT., LBS.: 154,000 (70-ton)
 CAPACITY, LBS.: 2608
 CAPACITY, CU. FT.: E-60
 COUPLERS: AB
 YOKES: AJAX
 AIRBRAKES:
 HANDBRAKE:

GENERAL DIMENSIONS:
 TRAIN LENGTH: 44' 4"
 MAX. HEIGHT: 11' 9-1/4"
 MAX. WIDTH: 10' 5-1/2"
 INSIDE LENGTH: 40' 8"
 INSIDE WIDTH: 9' 7-3/4"

NOTE: CARS IN THIS SERIES ARE NOT ALL THE SAME.
 DIMENSIONS MAY VARY SLIGHTLY.

FREIGHT CAR SERIE 14900-14924

CAR TYPE BALLAST

BUILT DATE(S)

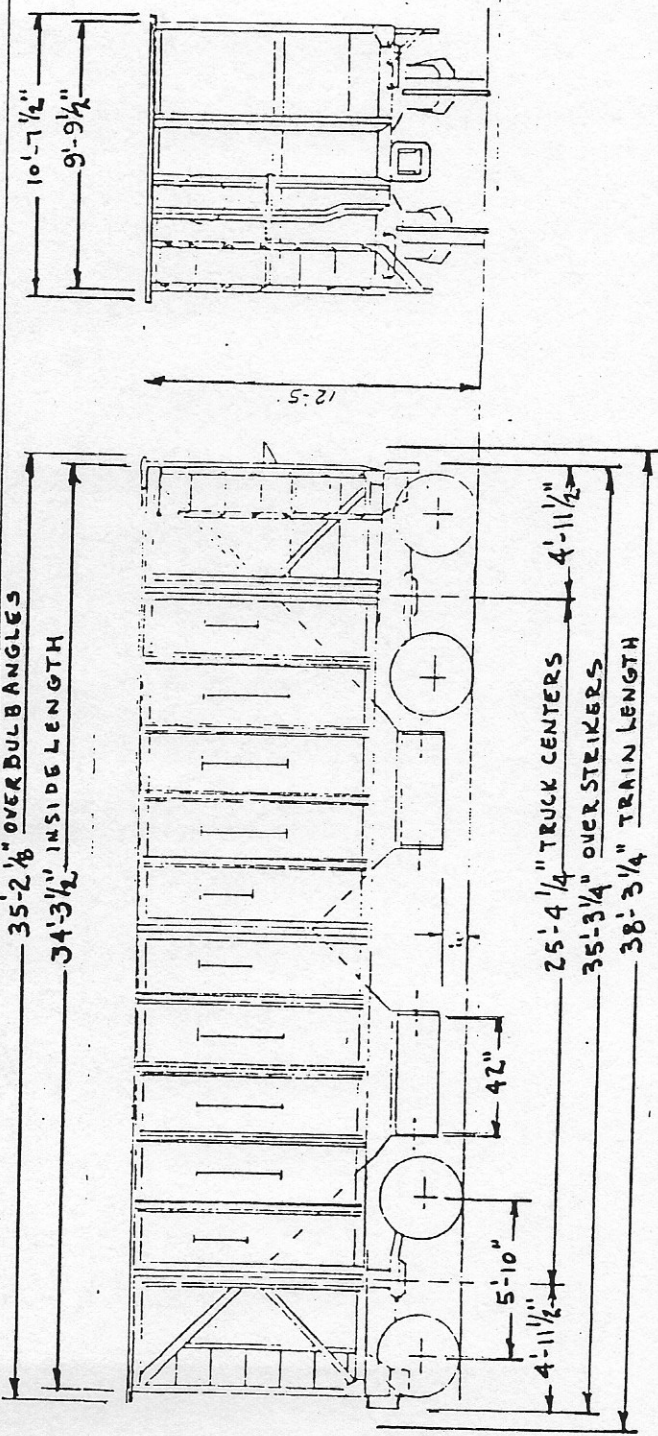
1953 EMPTY WEIGHT 46,200

08-Feb-96

18 ACTIVE CARS

TYPE	ARR CAR NUMBER	BUILT DATE	COMMENTS
H4M	14900	1953	Ballast
H4M	14901	1953	Ballast
H4M	14902	1953	Ballast
H4M	14903	1953	Ballast
H4M	14904	1953	Ballast
H4M	14905	1953	Ballast
H4M	14906	1953	Ballast
H4M	14907	1953	Ballast
H4M	14908	1953	Ballast
H4M	14909	1953	Ballast
H4M	14910	1953	Ballast
H4M	14912	1953	Ballast
H4M	14913	1953	Ballast
H4M	14920	1953	Ballast
H4M	14921	1953	Ballast
H4M	14922	1953	Ballast
H4M	14923	1953	Ballast
H4M	14924	1953	Ballast

BALLAST CARS
14900 - 14924



BUILT BY:

1953 - 1959

DATE BUILT:

M. K. CO., 1976

RECONDITIONED BY:

M. K. CO.

PURCHASED FROM:

1976

PLACED IN SERVICE:

33"

WHEEL DIA.

TRUCKS

JOURNALS

6" x 11" ROLLER BEARING

LT. WT., LBS.

46,200

CAPACITY, LBS.

154,000 (70-TON)

CAPACITY, CU. FT.

1958

COUPLERS:

E-50

YOKES:

AB

AIRBRAKES:

HANDBRAKE

GENERAL DIMENSIONS:

TRAIN LENGTH:

38' 3-1/2"

MAX. HEIGHT:

12' 5"

MAX. WIDTH:

10' 7-1/2"

INSIDE LENGTH:

34' 3-1/2"

INSIDE WIDTH:

9' 9-1/2"

DOORS: MK 42" FLOW CONTROL DOORS

NOTES: CARS WERE FORMER NORTH AMERICAN NAHX
30000 SERIES COVERED HOPPERS.

ALL CARS IN THIS SERIES ARE NOT THE SAME.
DIMENSIONS MAY VARY SLIGHTLY.

FREIGHT CAR SERIE 15100-15123 CAR TYPE AIR DUMP

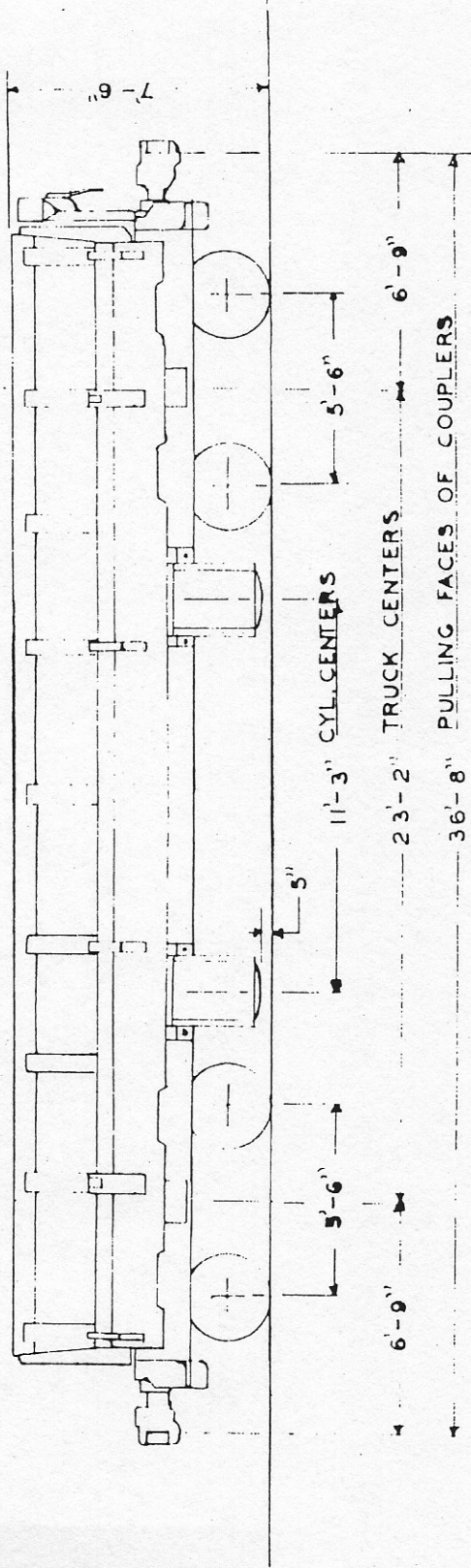
BUILT DATE(S) 1934, 1947 EMPTY WEIGHT 65,000 & 3

08-Feb-96

6 ACTIVE CARS 30 yard

TYPE	ARR CAR NUMBER	BUILT DATE	COMMENTS
AD2	15104	1947	3000 cf
AD2	15105	1947	3000 cf
AD2	15106	1947	3000 cf
AD2	15107	1947	3000 cf
AD2	15108	1947	3000 cf
AD2	15109	1947	3000 cf

15000-15004 DUMP CARS



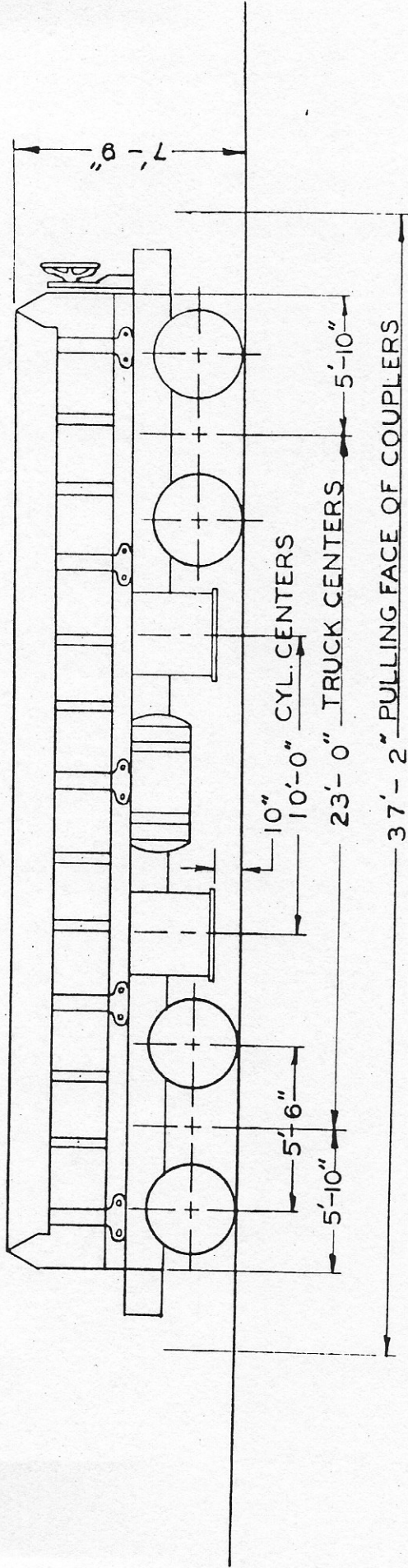
BUILT BY
 DATE BUILT
 REBUILT BY
 PURCHASED FROM
 PLACED IN SERVICE
 WHEELS
 TRUCKS
 AXLES
 BEARINGS
 UNDERFRAME
 LIGHT WEIGHT - LBS.
 CAPACITY - YDS.
 COUPLERS
 YOKES
 AIRBRAKES
 HANDBRAKE

MAGOR CAR CORP
 1953
 U.S. NAVY
 1964
 "BETTENDORF" TYPE
 5 1/2" X 10"
 FRICTION
 STEEL
 56,200
 30
 E-60
 Y-40
 A.B. 10" X 12"
 UNIVERSAL

GENERAL DIMENSIONS:
 TRAIN LENGTH
 MAX. HEIGHT
 MAX. WIDTH OVER SIDE SILLS
 INSIDE LENGTH TOP
 INSIDE LENGTH BOTTOM
 INSIDE WIDTH TOP
 INSIDE WIDTH BOTTOM
 INSIDE DEPTH

36'-8"
 7'-6"
 10'-6"
 31'-10 1/2"
 30'-6 1/2"
 10'-1"
 8'-3"
 2'-10"

15100-15109 DUMP CARS



BUILT BY
 DATE BUILT
 REBUILT BY
 PURCHASED FROM
 PLACED IN SERVICE
 WHEELS
 TRUCKS
 AXLES
 BEARINGS
 UNDERFRAME
 LIGHTWEIGHT - LBS.
 CAPACITY
 COUPLERS
 YOKES
 AIRBRAKES
 HANDBRAKES

AUSTIN WESTERN CO.
 1947
 AUSTIN WESTERN CO.
 SEPT. TO DEC. 1947
 33
 UNIT,
 5 1/2 X 10
 FRICTION
 STEEL
 65,000#
 100,000 # 30 YDS.
 6 1/4" X 8" SHANK TYPE - E ROT. OP.
 VERTICAL W/ 6" X 1 1/2" HORIZ. KEY,
 AB - 10 X 12
 AJAX POWER

GENERAL DIMENSIONS:

TRAIN LENGTH 37'-2"
 MAX. HEIGHT 7'-9"
 INSIDE LENGTH TOP 10'-6"
 INSIDE LENGTH BOTTOM 31'-7 1/2"
 INSIDE WIDTH TOP 29'-9"
 INSIDE WIDTH BOTTOM 9'-3"
 INSIDE DEPTH 9'-0"
 2'-11"

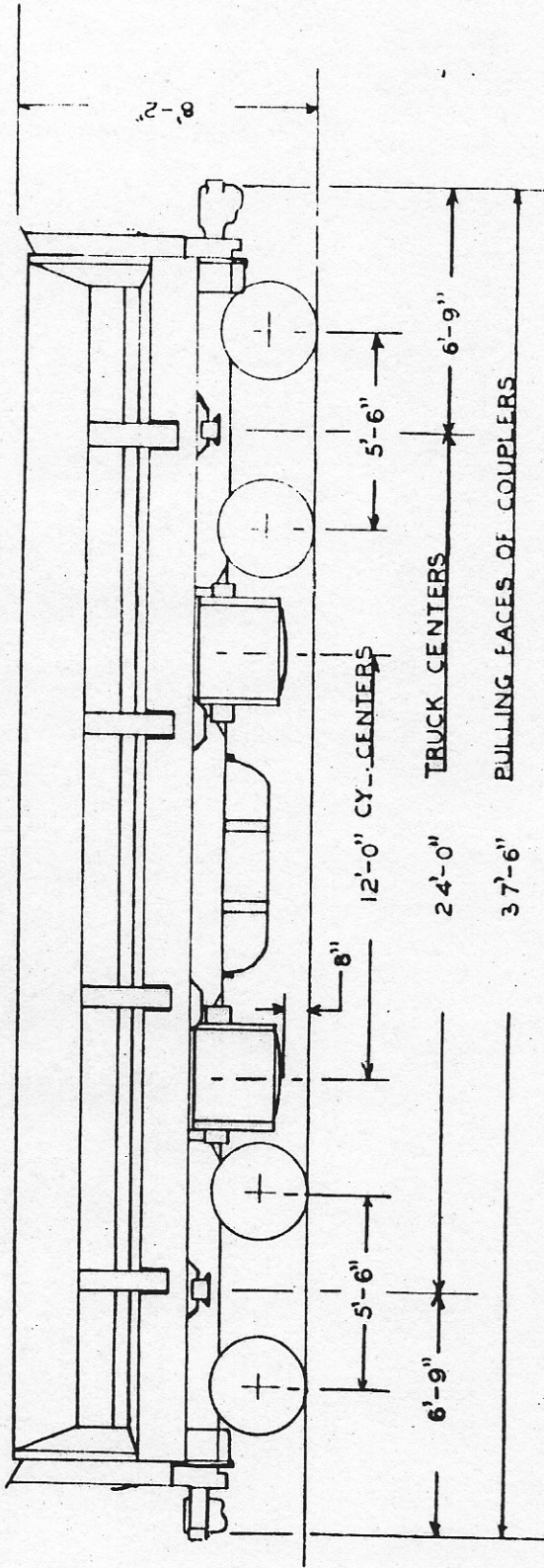
FREIGHT CAR SERIES 15747-15784 CAR TYPE AIR DUMP

BUILT DATE(S) 1954, 1958 EMPTY WEIGHT 78,400

08-Feb-96 11 ACTIVE CARS 40 yard

TYPE	ARR CAR NUMBER	BUILT DATE	COMMENTS
AD2	15750	1954, 1958	3000 cf
AD2	15751	1954, 1958	3000 cf
AD2	15756	1954, 1958	3000 cf
AD2	15761	1954, 1958	3000 cf
AD2	15765	1954, 1958	3000 cf
AD2	15766	1954, 1958	3000 cf
AD2	15773	1954, 1958	3000 cf
AD2	15779	1954, 1958	3000 cf
AD2	15780	1954, 1958	3000 cf
AD2	15781	1954, 1958	3000 cf
AD2	15782	1954, 1958	3000 cf

15747-15784 DUMP CARS



BUILT BY DIFFERENTIAL STEEL CAR CO.
 DATE BUILT 1954 & 1958 SEE NOTE
 REBUILT BY
 PURCHASED FROM KENNECOTT COPPER CO.
 PLACED IN SERVICE AUG 1964
 WHEELS 33"
 TRUCKS BARBER
 AXLES 6 1/2" X 12"
 BEARINGS TIMKEN 6 1/2" X 12"
 UNDERFRAME STEEL
 LIGHT WEIGHT 78,400 LBS.
 CAPACITY 40 YDS.
 COUPLER TYPE E-60
 YOKES CAST STEEL
 AIRBRAKES AB 10" X 12"
 HANDBRAKE MINER

GENERAL DIMENSIONS:

TRAIN LENGTH 37'-6"
 MAX. HEIGHT 8'-2"
 MAX. WIDTH OVER SIDE SILLS 10'-10"
 INSIDE LENGTH TOP 35'-4"
 INSIDE LENGTH BOTTOM 33'-9"
 INSIDE WIDTH TOP 10'-8"
 INSIDE WIDTH BOTTOM 8'-5 1/2"
 INSIDE HEIGHT 3'-4"

NOTE: SERIES 15747-15766 BUILT IN 1954
 SERIES 15767-15784 BUILT IN 1958

AL SIGMA FP

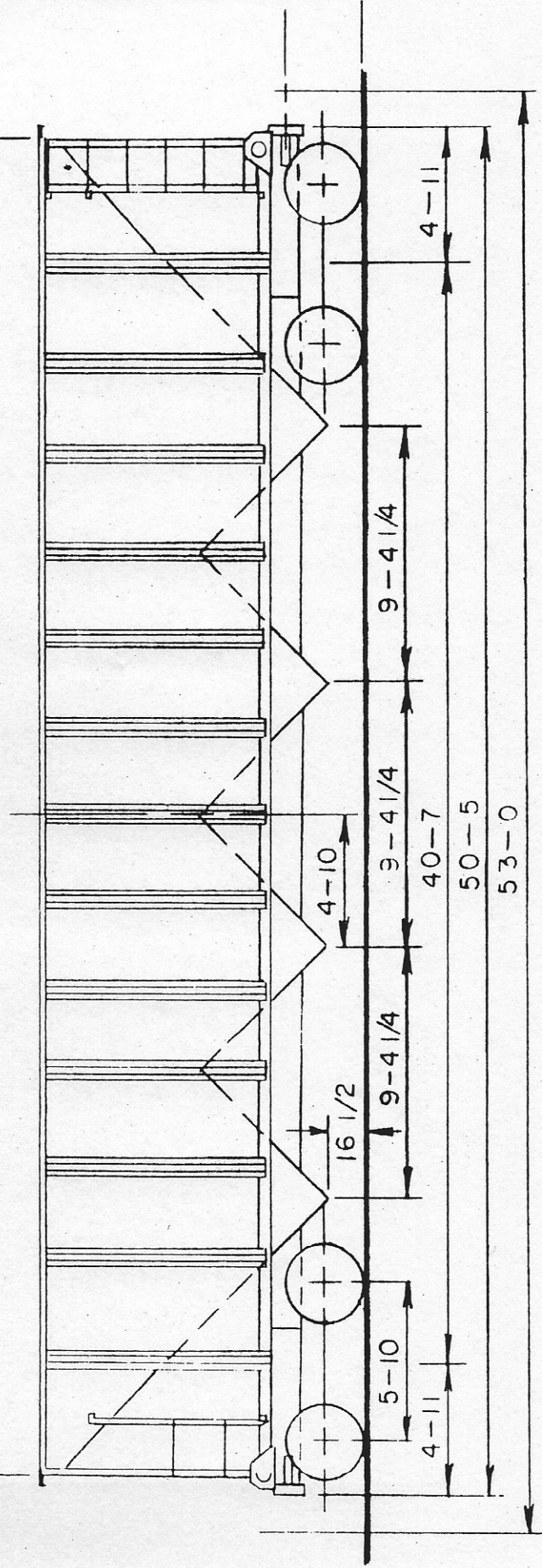
FREIGHT CAR S 15800-15806 CAR TYPE AIR DUMP
 BUILT DATE(S) 1992 EMPTY WEIGHT 78,400
 08-Feb-96 27 ACTIVE CARS 40 yard

TYPE	ARR CAR NUMB	BUILT DATE	COMMENTS
AD2	15800	1992	3000 cf
AD2	15801	1992	3000 cf
AD2	15802	1992	3000 cf
AD2	15803	1992	3000 cf
AD2	15804	1992	3000 cf
AD2	15805	1992	3000 cf
AD2	15806	1992	3000 cf
AD2	15825	1992	3000 cf
AD2	15826	1992	3000 cf
AD2	15827	1992	3000 cf
AD2	15828	1992	3000 cf
AD2	15829	1992	3000 cf
AD2	15830	1992	3000 cf
AD2	15831	1992	3000 cf
AD2	15832	1992	3000 cf
AD2	15833	1992	3000 cf
AD2	15834	1992	3000 cf
AD2	15835	1992	3000 cf
AD2	15836	1992	3000 cf
AD2	15837	1992	3000 cf
AD2	15838	1992	3000 cf
AD2	15839	1992	3000 cf
AD2	15840	1992	3000 cf
AD2	15841	1992	3000 cf
AD2	15842	1992	3000 cf
AD2	15843	1992	3000 cf
AD2	15844	1992	3000 cf

H-5	16046	1981	4 pocket
H-5	16047	1981	4 pocket
H-5	16048	1981	4 pocket
H-5	16049	1981	4 pocket
H-5	16050	1981	4 pocket
H-5	16051	1981	4 pocket
H-5	16052	1981	4 pocket
H-5	16053	1981	4 pocket
H-5	16054	1981	4 pocket
H-5	16055	1981	4 pocket
H-5	16056	1981	4 pocket
H-5	16057	1981	4 pocket
H-5	16058	1981	4 pocket
H-5	16059	1981	4 pocket
H-5	16060	1981	4 pocket
H-5	16061	1981	4 pocket
H-5	16062	1981	4 pocket
H-5	16063	1981	4 pocket
H-5	16064	1981	4 pocket
H-5	16065	1981	4 pocket
H-5	16066	1981	4 pocket
H-5	16067	1981	4 pocket
H-5	16068	1981	4 pocket
H-5	16069	1981	4 pocket
H-5	16070	1981	4 pocket
H-5	16071	1981	4 pocket
H-5	16072	1981	4 pocket
H-5	16075	1981	4 pocket

16000-16076 HOPPERS

49-2



BUILT BY 00-24
 BUILT BY 25-76
 DATE BUILT
 REBUILT BY
 DATE PLACED IN SERVICE 1981, 1982
 WHEELS 36
 AXLES 6 1/2 x 12
 TRUCKS AMERICAN STEEL FOUND.
 BEARINGS ROLLER
 UNDERFRAME RIGID
 LIGHTWEIGHT LBS 64,700
 CAPACITY LBS CUFT 198,000 3364
 COUPLERS TYPE E
 YOKES TYPE Y 40A-E
 AIR BRAKES AB 8 1/2 x 12
 HANDBRAKES AAR 1980

CHESSIE PACIFIC CAR & FOUNDRY DIMENSIONS

TRAIN LENGTH 53'-0"
 MAX. HEIGHT 12'-0"
 MAX. WIDTH 10'-7"
 INSIDE LENGTH 49'-2"
 INSIDE WIDTH 9'-9"
 DOORS 8
 CENTER OF GRAVITY 50.56"

4-11
 5-10
 4-11
 4-10
 3-4 1/4
 9-4 1/4
 40-7
 50-5
 53-0

FREIGHT CAR SERIE 16101 - 16180 CAR TYPE HOPPER

BUILT DATE(S) 1983 EMPTY WEIGHT

08-Feb-96 64 ACTIVE CARS

TYPE	ARR CAR NUMBER	BUILT DATE	COMMENTS
H-5	16100	1983	3 Pocket
H-5	16101	1983	3 Pocket
H-5	16102	1983	3 Pocket
H-5	16104	1983	3 Pocket
H-5	16105	1983	3 Pocket
H-5	16106	1983	3 Pocket
H-5	16107	1983	3 Pocket
H-5	16108	1983	3 Pocket
H-5	16109	1983	3 Pocket
H-5	16110	1983	3 Pocket
H-5	16111	1983	3 Pocket
H-5	16112	1983	3 Pocket
H-5	16113	1983	3 Pocket
H-5	16114	1983	3 Pocket
H-5	16116	1983	3 Pocket
H-5	16117	1983	3 Pocket
H-5	16118	1983	3 Pocket
H-5	16119	1983	3 Pocket
H-5	16120	1983	3 Pocket
H-5	16121	1983	3 Pocket
H-5	16122	1983	3 Pocket
H-5	16123	1983	3 Pocket
H-5	16124	1983	3 Pocket
H-5	16125	1983	3 Pocket
H-5	16127	1983	3 Pocket
H-5	16128	1983	3 Pocket
H-5	16129	1983	3 Pocket
H-5	16130	1983	3 Pocket
H-5	16131	1983	3 Pocket
H-5	16133	1983	3 Pocket
H-5	16135	1983	3 Pocket
H-5	16137	1983	3 Pocket
H-5	16138	1983	3 Pocket
H-5	16140	1983	3 Pocket
H-5	16141	1983	3 Pocket
H-5	16142	1983	3 Pocket
H-5	16144	1983	3 Pocket
H-5	16145	1983	3 Pocket
H-5	16147	1983	3 Pocket
H-5	16148	1983	3 Pocket
H-5	16149	1983	3 Pocket
H-5	16150	1983	3 Pocket

FREIGHT CAR SERIES

16200 - 16253

CAR TYPE HOPPER

BUILT DATE(S) Trinity

1996 EMPTY WEIGHT

08-Feb-96

53 ACTIVE CARS

TYPE	ARR CAR NUMBER	BUILT DATE	COMMENTS
	16200	Feb. 1996	4 pocket
	16201	Feb. 1996	4 pocket
	16202	Feb. 1996	4 pocket
	16203	Feb. 1996	4 pocket
	16204	Feb. 1996	4 pocket
	16205	Feb. 1996	4 pocket
	16206	Feb. 1996	4 pocket
	16207	Feb. 1996	4 pocket
	16208	Feb. 1996	4 pocket
	16209	Feb. 1996	4 pocket
	16210	Feb. 1996	4 pocket
	16211	Feb. 1996	4 pocket
	16212	Feb. 1996	4 pocket
	16213	Feb. 1996	4 pocket
	16214	Feb. 1996	4 pocket
	16215	Feb. 1996	4 pocket
	16216	Feb. 1996	4 pocket
	16217	Feb. 1996	4 pocket
	16218	Feb. 1996	4 pocket
	16219	Feb. 1996	4 pocket
	16220	Feb. 1996	4 pocket
	16221	Feb. 1996	4 pocket
	16222	Feb. 1996	4 pocket
	16223	Feb. 1996	4 pocket
	16224	Feb. 1996	4 pocket
	16225	Feb. 1996	4 pocket
	16226	Feb. 1996	4 pocket
	16227	Feb. 1996	4 pocket
	16228	Feb. 1996	4 pocket
	16229	Feb. 1996	4 pocket
	16230	Feb. 1996	4 pocket
	16231	Feb. 1996	4 pocket
	16232	Feb. 1996	4 pocket
	16233	Feb. 1996	4 pocket
	16234	Feb. 1996	4 pocket
	16235	Feb. 1996	4 pocket
	16236	Feb. 1996	4 pocket
	16237	Feb. 1996	4 pocket
	16238	Feb. 1996	4 pocket
	16239	Feb. 1996	4 pocket
	16240	Feb. 1996	4 pocket
	16241	Feb. 1996	4 pocket

FREIGHT CAR SERIE 17000-17014 CAR TYPE FLAT

BUILT DATE(S) 1982 EMPTY WEIGHT 78,500

08-Feb-96 15 ACTIVE CARS

TYPE	ARR CAR NUMBER	BUILT DATE	COMMENTS
F-6	17000	1982	60-80' Chain Tie Down
F-6	17001	1982	60-80' Chain Tie Down
F-6	17002	1982	60-80' Chain Tie Down
F-6	17003	1982	60-80' Chain Tie Down
F-6	17004	1982	60-80' Chain Tie Down
F-6	17005	1982	60-80' Chain Tie Down
F-6	17006	1982	60-80' Chain Tie Down
F-6	17007	1982	60-80' Chain Tie Down
F-6	17008	1982	60-80' Chain Tie Down
F-6	17009	1982	60-80' Chain Tie Down
F-6	17010	1982	60-80' Chain Tie Down
F-6	17011	1982	60-80' Chain Tie Down
F-6	17012	1982	60-80' Chain Tie Down
F-6	17013	1982	60-80' Chain Tie Down
F-6	17014	1982	60-80' Chain Tie Down

FREIGHT CAR SERIE 19000-19013

CAR TYPE SHUTTLE FLAT

BUILT DATE(S)

1955

EMPTY WEIGHT

76,000

08-Feb-96

20 ACTIVE CARS

TYPE

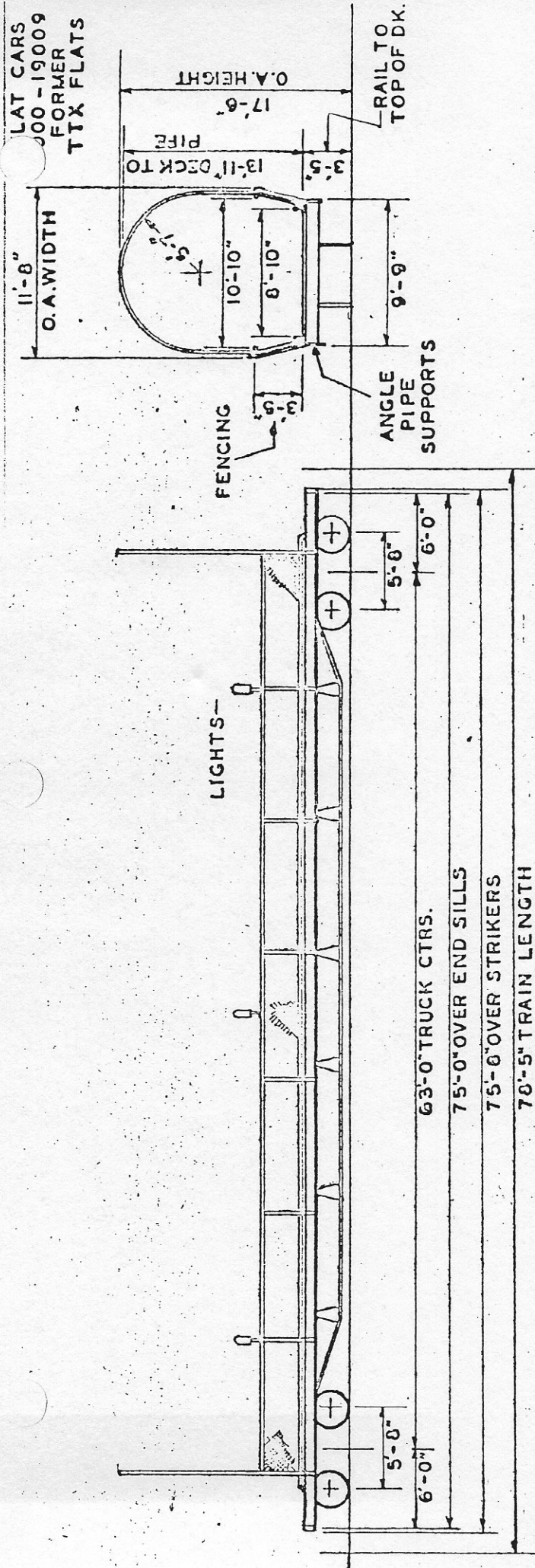
ARR CAR NUMBER

BUILT DATE

SPECIAL EQUIPMENT

19000	1955	Ramp Flat 60-80'
19001	1955	Ramp Flat 60-80'
19002	1955	Ramp Flat 60-80'
19003	1955	Ramp Flat 60-80'
19004	1955	Ramp Flat 60-80'
19005	1955	Ramp Flat 60-80'
19006	1955	Ramp Flat 60-80'
19007	1955	Ramp Flat 60-80'
19008	1955	Ramp Flat 60-80'
19009	1955	Ramp Flat 60-80'
19010	1955	Ramp Flat
19011	1955	Ramp Flat
19012	1955	Ramp Flat
19025	1956	Ramp Flat
19026	1956	Ramp Flat
19027	1956	Ramp Flat
19028	1956	Ramp Flat
19029	1956	Ramp Flat
19030	1956	Ramp Flat
19054	1964	Flat 80'

TOFC/COFC



LAT CARS
JOO - 19009
FORMER
TTX FLATS

BUILT BY ACF CO.
 DATE BUILT 1955 & 1957
 PURCHASED FROM TRAILER TRAIN CO.
 PLACED IN SERVICE ON ARR 1958
 WHEELS 2W-33"
 TRUCKS TIMKEN RD 6X11
 BEARINGS F-TYPE
 COUPLERS Y-45
 YOKES AB
 AIRBRAKES
 DRAFT GEAR
 LIGHT WEIGHT-LBS. 76000
 CAPACITY-LBS. 125,000
 HANDBRAKES

GENERAL DIMENSIONS:
 TRAIN LENGTH 78'-5"
 LENGTH OVER END SILLS 75'-0"
 MAX. OVERALL HEIGHT 17'-6"
 MAX. OVERALL WIDTH 11'-8"
 WIDTH OVER ANGLE PIPE SUPPORTS 9'-9"
 AT SIDE SILL

NOTE:
 CARS 19000-19005 BUILT IN 1955
 CARS 19006-19009 BUILT IN 1957

FENCING & PIPE LOOPS USED DURING TOURIST
 SEASON ONLY - WHITTIER - PORTAGE SHUTTLE.

FREIGHT CAR SERIES 19100-19144

CAR TYPE TOFC FLAT

BUILT DATE(S)

1985

EMPTY WEIGHT

95,000

08-Feb-96

43 ACTIVE CARS

TYPE	ARR CAR NUMBER	BUILT DATE	COMMENTS	Special Equip.
FT8	19100	1985	TOFC 80'	Aritculated cars
FT8	19101	1985	TOFC 80'	Aritculated cars
FT8	19102	1985	TOFC 80'	Aritculated cars
FT8	19103	1985	TOFC 80'	Aritculated cars
FT8	19106	1985	TOFC 80'	Aritculated cars
FT8	19107	1985	TOFC 80'	Aritculated cars
FT8	19108	1985	TOFC 80'	Aritculated cars
FT8	19109	1985	TOFC 80'	Aritculated cars
FT8	19110	1985	TOFC 80'	Aritculated cars
FT8	19111	1985	TOFC 80'	Aritculated cars
FT8	19112	1985	TOFC 80'	Aritculated cars
FT8	19113	1985	TOFC 80'	Aritculated cars
FT8	19114	1985	TOFC 80'	Aritculated cars
FT8	19115	1985	TOFC 80'	Aritculated cars
FT8	19116	1985	TOFC 80'	Aritculated cars
FT8	19117	1985	TOFC 80'	Aritculated cars
FT8	19118	1985	TOFC 80'	Aritculated cars
FT8	19119	1985	TOFC 80'	Aritculated cars
FT8	19120	1985	TOFC 80'	Aritculated cars
FT8	19121	1985	TOFC 80'	Aritculated cars
FT8	19122	1985	TOFC 80'	Aritculated cars
FT8	19123	1985	TOFC 80'	Aritculated cars
FT8	19124	1985	TOFC 80'	Aritculated cars
FT8	19125	1985	TOFC 80'	Aritculated cars
FT8	19126	1985	TOFC 80'	Aritculated cars
FT8	19127	1985	TOFC 80'	Aritculated cars
FT8	19128	1985	TOFC 80'	Aritculated cars
FT8	19129	1985	TOFC 80'	Aritculated cars
FT8	19130	1985	TOFC 80'	220 VOLT ELECT
FT8	19131	1985	TOFC 80'	220 VOLT ELECT
FT8	19132	1985	TOFC 80'	220 VOLT ELECT
FT8	19133	1985	TOFC 80'	220 VOLT ELECT
FT8	19134	1985	TOFC 80'	220 VOLT ELECT
FT8	19135	1985	TOFC 80'	220 VOLT ELECT
FT8	19136	1985	TOFC 80'	220 VOLT ELECT
FT8	19137	1985	TOFC 80'	220 VOLT ELECT
FT8	19138	1985	TOFC 80'	220 VOLT ELECT
FT8	19139	1985	TOFC 80'	220 VOLT ELECT
FT8	19140	1985	TOFC 80'	220 VOLT ELECT
FT8	19141	1985	TOFC 80'	220 VOLT ELECT
FT8	19142	1985	TOFC 80'	220 VOLT ELECT
FT8	19143	1985	TOFC 80'	220 VOLT ELECT

FREIGHT CAR SERIES

CAR TYPE

BUILT DATE(S)

EMPTY WEIGHT

08-Feb-96

19 ACTIVE CARS

Type	ARR CAR NUMBER	LEASED BY	CAR TYPE	Special Equip.
F6	CRLE 4000	Alaksa West	COFC- FLAT	
F6	CRLE 4001	Alaksa West	COFC- FLAT	
F6	CRLE 4002	Alaksa West	COFC- FLAT	
F6	CRLE 4003	Alaksa West	COFC- FLAT	
F6	CRLE 4004	Alaksa West	COFC- FLAT	
F6	CRLE 4006	Alaksa West	COFC- FLAT	
F6	CRLE 4008	Alaksa West	COFC- FLAT	
F6	CRLE 4009	Alaksa West	COFC- FLAT	
F6	CRLE 4011	Alaksa West	COFC- FLAT	
F6	CRLE 4013	Alaksa West	COFC- FLAT	
F6	CRLE 4017	Alaksa West	COFC- FLAT	
F6	CRLE 4018	Alaksa West	COFC- FLAT	
F6	CRLE 4019	Alaksa West	COFC- FLAT	
F6	CRLE 4020	Alaksa West	COFC- FLAT	
F6	CRLE 4021	Alaksa West	COFC- FLAT	
F6	CRLE 4022	Alaksa West	COFC- FLAT	
F6	CRLE 4024	Alaksa West	COFC- FLAT	
F6	CRLE 4025	Alaksa West	COFC- FLAT	
F6	CRLE 4026	Alaksa West	COFC- FLAT	

FREIGHT CAR SERIES

CAR TYPE HOPPER

BUILT DATE(S)

EMPTY WEIGHT

08-Feb-96

79 ACTIVE CARS

Type	INITIAL	CAR NUMBER	BUILT DATE	LEASED BY	Special Equip.
H5	TNM	20000		AS&G	
H5	TNM	20001		AS&G	
H5	TNM	20002		AS&G	
H5	TNM	20003		AS&G	
H5	TNM	20004		AS&G	
H5	TNM	20005		AS&G	
H5	TNM	20006		AS&G	
H5	TNM	20007		AS&G	
H5	TNM	20008		AS&G	
H5	TNM	20009		AS&G	
H5	TNM	20010		AS&G	
H5	TNM	20011		AS&G	
H5	TNM	20012		AS&G	
H5	TNM	20013		AS&G	
H5	TNM	20014		AS&G	
H5	TNM	20015		AS&G	
H5	TNM	20016		AS&G	
H5	TNM	20017		AS&G	
H5	TNM	20018		AS&G	
H5	TNM	20019		AS&G	
H5	TNM	20020		AS&G	
H5	TNM	20021		AS&G	
H5	TNM	20022		AS&G	
H5	TNM	20023		AS&G	
H5	TNM	20024		AS&G	
H5	TNM	20025		AS&G	
H5	TNM	20026		AS&G	
H5	TNM	20027		AS&G	
H5	TNM	20028		AS&G	
H5	TNM	20029		AS&G	
H5	TNM	20030		AS&G	
H5	TNM	20031		AS&G	
H5	TNM	20032		AS&G	
H5	TNM	20033		AS&G	
H5	TNM	20034		AS&G	
H5	TNM	20035		AS&G	
H5	TNM	20036		AS&G	
H5	TNM	20037		AS&G	
H5	TNM	20038		AS&G	
H5	TNM	20039		AS&G	
H5	TNM	20040		AS&G	
H5	TNM	20041		AS&G	
H5	TNM	20042		AS&G	
H5	TNM	20043		AS&G	
H5	TNM	20044		AS&G	
H5	TNM	20045		AS&G	
H5	TNM	20046		AS&G	
H5	TNM	20047		AS&G	
H5	TNM	20048		AS&G	
H5	TNM	20049		AS&G	
H5	TNM	20050		AS&G	
H5	TNM	20051		AS&G	
H5	TNM	20052		AS&G	
H5	TNM	20053		AS&G	
H5	TNM	20054		AS&G	
H5	TNM	20055		AS&G	
H5	TNM	20056		AS&G	
H5	TNM	20057		AS&G	
H5	TNM	20058		AS&G	

FREIGHT CAR SERIES

CAR TYPE HOPPER

BUILT DATE(S)

EMPTY WEIGHT

08-Feb-96

9 ACTIVE CARS

Type	INITIAL	CAR NUMBER	BUILT DATE	LEASED BY	Special Equip.	OWNER
F8	TTAX	970615		ARRC		Trailer train
F8	TTAX	974005		ARRC		Trailer train
F8	TTAX	974182		ARRC		Trailer train
F8	TTAX	974208		ARRC		Trailer train
F8	TTAX	974238		ARRC		Trailer train
F8	TTAX	974434		ARRC		Trailer train
F8	TTAX	974804		ARRC		Trailer train
F8	TTWX	980846		ARRC		Trailer train
F8	TTWX	990811		ARRC		Trailer train

140615
 140616
 140617
 140618
 140619
 140620
 140621
 140622
 140623
 140624
 140625
 140626
 140627
 140628
 140629
 140630
 140631
 140632
 140633
 140634
 140635
 140636
 140637
 140638
 140639
 140640
 140641
 140642
 140643
 140644
 140645
 140646
 140647
 140648
 140649
 140650
 140651
 140652
 140653
 140654
 140655
 140656
 140657
 140658
 140659
 140660
 140661
 140662
 140663
 140664
 140665
 140666
 140667
 140668
 140669
 140670
 140671
 140672
 140673
 140674
 140675
 140676
 140677
 140678
 140679
 140680
 140681
 140682
 140683
 140684
 140685
 140686
 140687
 140688
 140689
 140690
 140691
 140692
 140693
 140694
 140695
 140696
 140697
 140698
 140699
 140700

ITLX	224988	
ITLX	224989	
ITLX	224990	
ITLX	224991	
ITLX	224992	
ITLX	224993	
ITLX	224994	
ITLX	224995	
ITLX	224996	
ITLX	224997	
ITLX	224998	
ITLX	224999	
ITLX	225000	
ITLX	225001	
ITLX	225002	
ITLX	225003	
ITLX	225004	
ITLX	225005	
ITLX	225006	
ITLX	225007	
ITLX	225008	
ITLX	225013	
ITLX	225014	
ITLX	225015	
ITLX	225016	
ITLX	225017	
ITLX	225018	
ITLX	225019	
ITLX	225020	
ITLX	225021	
ITLX	225022	
ITLX	225023	
ITLX	225024	
ITLX	225025	
ITLX	225026	
ITLX	225027	
ITLX	225028	
ITLX	225029	
ITLX	225030	
ITLX	225031	
ITLX	225032	
ITLX	225033	
ITLX	225034	
ITLX	225035	
ITLX	225036	
ITLX	225037	
ITLX	225038	
ITLX	225039	
ITLX	225040	
ITLX	225041	
ITLX	225042	
ITLX	225043	
ITLX	225044	
ITLX	225045	
ITLX	225046	
ITLX	225047	
ITLX	225048	
ITLX	225049	
ITLX	225050	
ITLX	225051	
ITLX	225052	

TILX	260495
TILX	260496
TILX	260497
TILX	260498
TILX	260499
TILX	260500
TILX	260501
TILX	260502
TILX	260503
TILX	260504
TILX	260505
TILX	260506
TILX	260507
TILX	260508
TILX	260509
TILX	260510
TILX	260511
TILX	260732
TILX	260733
TILX	260734
TILX	260735
TILX	260736
TILX	260737
TILX	260738
TILX	260739
TILX	260740
TILX	260741
TILX	260742
TILX	260743
TILX	260744
TILX	260745
TILX	260746
TILX	260747
TILX	260748
TILX	260749
TILX	260750
TILX	260751
TILX	260752
TILX	260753
TILX	260754
TILX	260755
TILX	260756
TILX	260757
TILX	260758
TILX	260759
TILX	260760
TILX	260761
TILX	260762
TILX	260763
TILX	260764
TILX	260765
TILX	260766
TILX	260767
TILX	260768
TILX	260769
TILX	260770
TILX	260771
TILX	260772
TILX	260773
TILX	260774
TILX	260775

FREIGHT CAR SERIES

CAR TYPE

Tank

BUILT DATE(S)

EMPTY WEIGHT

08-Feb-96

12 ACTIVE CARS

Type	INITIAL	CAR NUMBER	BUILT DATE	COMMENTS	Special Equip.
T5T	GATX	10120			
T5T	GATX	11599			
T5T	GATX	13510			
T5T	GATX	13513			
T5T	GATX	14290			
T5T	GATX	15913			
T5T	GATX	87810			
T5T	GATX	87813			
T5T	UOCX	11016			
T5T	UOCX	11017			
T5T	UOCX	11019			
T5T	UOCX	11020			