

# The Kalamazoo "38" and "39" Motor Cars

**Equipped With Model "A"**

# FORD MOTOR

THIS "Kalamazoo Car", powered by the standard "Model A Ford Motor", forms a combination of quality unsurpassed in the development of railroad motor cars—for hauling extra large gangs, weed mowers, air compressors, heavily loaded trailers, and for many other heavy duty services.

This motor car is the product of a great many years of experience and continuous development which have given Kalamazoo Railway Motor Cars a reputation unsurpassed for convenience, easy and economical operation.

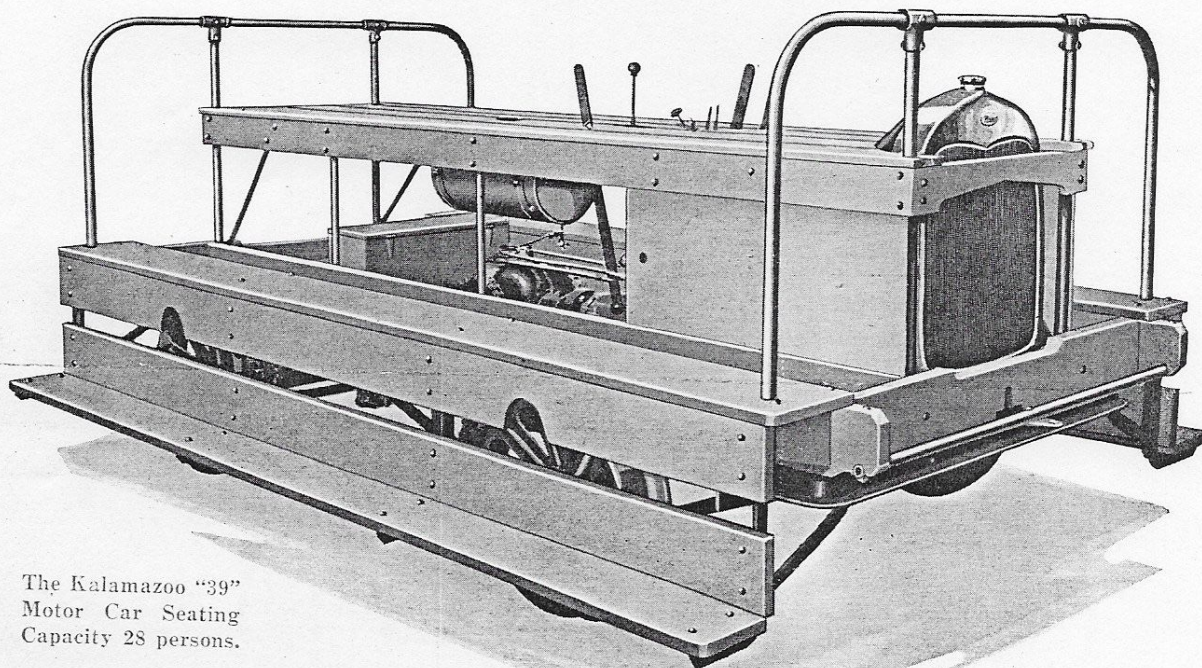
**FORNUS STEEL & EQUIPMENT**

FIRST FLOOR, SOUTH & HUDSON ST.  
SEATTLE, WASHINGTON

Northwestern Representative for Lima Locomotive Works, Inc.

Kalamazoo Railway Supply Co.  
Established 1883  
Kalamazoo, Mich., U.S.A.

# *Kalamazoo* means *Service to You!*

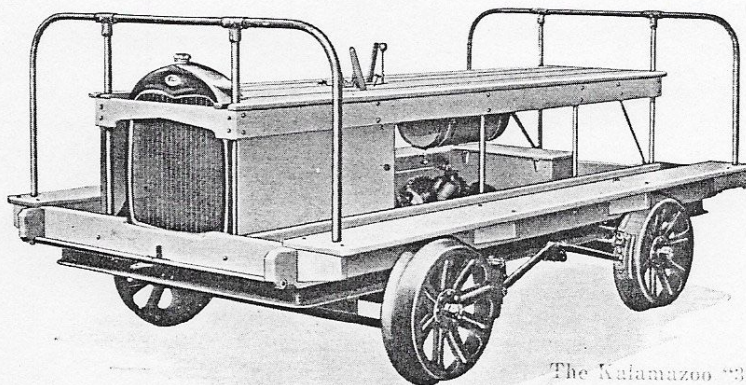


The Kalamazoo "39"  
Motor Car Seating  
Capacity 28 persons.

**T**HE Kalamazoo "38" and "39" Motor Cars are equipped with the standard Model "A" Ford Engine which develops 39 brake H.P. at 2200 R.P.M. It is exceptionally economical on gasoline and oil. The standard Ford starter, generator, battery and ignition are regular equipment. Lights furnished if desired at slight additional charge.

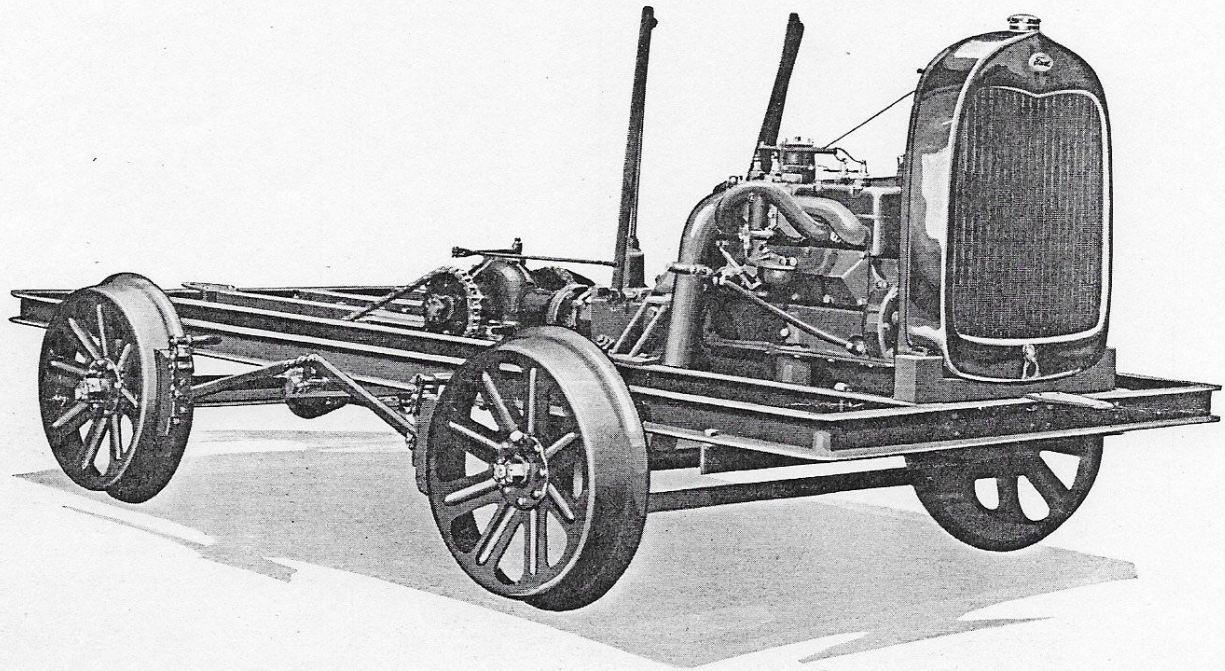
The Kalamazoo "39" Motor Car illustrated above has seating capacity for 28 persons, and is capable of hauling a great many more on trailers. Deep tool trays along each side of car provide ample space for carrying tools.

The Kalamazoo "38" Motor Car illustrated at the right has seating capacity for 14 persons. It has the same chassis and body as the Kalamazoo "39", the only difference being that the side steps are omitted.



The Kalamazoo "38"  
Motor Car Seating  
Capacity 14 persons.

# *Kalamazoo* *means Service to You!*

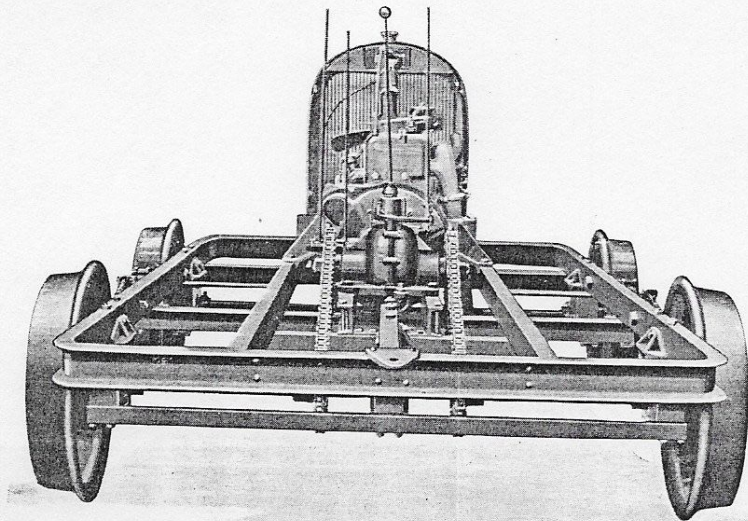


Car frame is constructed of 3" channel steel riveted and welded at all joints and securely trussed.

The axle boxes are carried on coil springs mounted in sturdy pedestals, assuring comfortable riding and longer life to the car in general.

Powerful adjustable brake mechanism assures safety at all speeds. Brake blocks are equipped with replaceable cast iron shoes.

The standard Ford Model "A" transmission and clutch are used. These coupled to the Kalamazoo reverse transmission provide for equal speeds in either direction.



Note the rugged Kalamazoo reverse transmission driving from both sides through heavy duty roller chains to the axle. This method of drive equalizes the strain on the transmission which assures longer life of the transmission and chains.

# SPECIFICATIONS

## BODY OF CAR

Body is constructed from well seasoned material rigidly supported and braced. Large trays on both sides provide ample space for carrying tools. The Kalamazoo "38" car has seating capacity for fourteen persons. When side steps are applied, the seating capacity is increased to 28 persons, and the car is called Kalamazoo "39".

## ENGINE

Ford Model "A" Engine.  
Bore,  $3\frac{7}{8}$ "; stroke,  $4\frac{1}{4}$ ".  
H.P.—S.A.E. rating 24.03.  
Brake H.P.—39 at 2200 R.P.M.

## TRANSMISSION

Standard Ford selective gear transmission, three speeds forward and one reverse coupled to the Kalamazoo reverse gear transmission giving three speeds in either direction. Final drive is from both sides of reverse transmission through two roller chains to rear axle.

## BRAKES

Powerful, adjustable toggle lever brakes acting on all four wheels. Brake blocks are equipped with replaceable cast iron shoes.

## WHEELS

20" Diameter cold formed steel wheels, standard M.C.B. flange, forged steel hub. All wheels have taper fit on axle except the loose wheel which is equipped with a straight fit bronze bushing.

## AXLES

Axles are  $1\frac{11}{16}$ " diameter. Front axle has taper wheel fit one end, other end straight fit for loose wheel. Drive axle has taper fit both ends.

## AXLE BEARINGS

Bower roller axle bearings which have hardened and ground rollers and races which take the thrust from the wheel flanges and eliminate all wear on the wheel hubs and cutting of the axles.

## INSULATIONS

Insulations are fitted to the wheel hubs on one side of car to prevent interference with automatic signals.

**Note:** This applies to standard 4'  $8\frac{1}{2}$ " gauge cars only. Odd gauge cars are equipped with insulations only when specified.

## TOOL BOX AND TRAY

A good tool box which can be locked is located under the top seat of car. Large tool space is also provided on both sides of car and under the top seat.

## SPECIAL BODIES

Various special body styles can be built on the standard chassis. Inquiries covering your specific requirements are respectfully solicited.

## WHEEL BASE

60"

## DRAW HEAD

Draw head is riveted and welded to the main frame both front and rear.

## SAFETY RAILS

Safety rails are standard equipment.

## FRAME

Main frame is built of standard 3" steel channel and angle, riveted and welded at all joints.

## FINISH

Standard color is brown gloss. Standard railroad colors can be furnished upon request at no extra charge.

## DIMENSIONS

Length over all, 123"  
Width over all—"38" car 70"  
                                  "39" car 84"  
Length of seat, 113"  
Width of seat, 30"  
Height from rail to seat  $40\frac{3}{8}$ "  
Height from rail to foot boards over wheels,  $23\frac{3}{8}$ "  
Height from rail to top of safety rail,  $52\frac{3}{8}$ ".

## WEIGHTS

"38" car  
Net weight—1850 lbs.  
Boxed for export, gross weight—3050 lbs.  
Cubic feet—285.  
"39" car  
Net weight—2100 lbs.  
Boxed for export, gross weight—3300 lbs.  
Cubic feet—285.

## CODE WORDS

Kalamazoo "38" car—"MOTOI"  
Kalamazoo "39" car—"MOTOJ"

# Kalamazoo Railway Supply Co.

MANUFACTURERS  
Kalamazoo, Mich., U.S.A.



IN STOCK AT SEATTLE  
READY FOR  
IMMEDIATE SHIPMENT