

9555055

FOR FRAMES OR ALL DIMENSIONS NOT OTHERWISE SPECIFIED TO BE IN ACCORDANCE WITH A.I. 2320.

POLEAK, ALL SHARP CORNERS, UNLESS OTHERWISE SPECIFIED.

COUNTERSINK ALL TAPPED HOLES TO ONE TIME & DEPT.

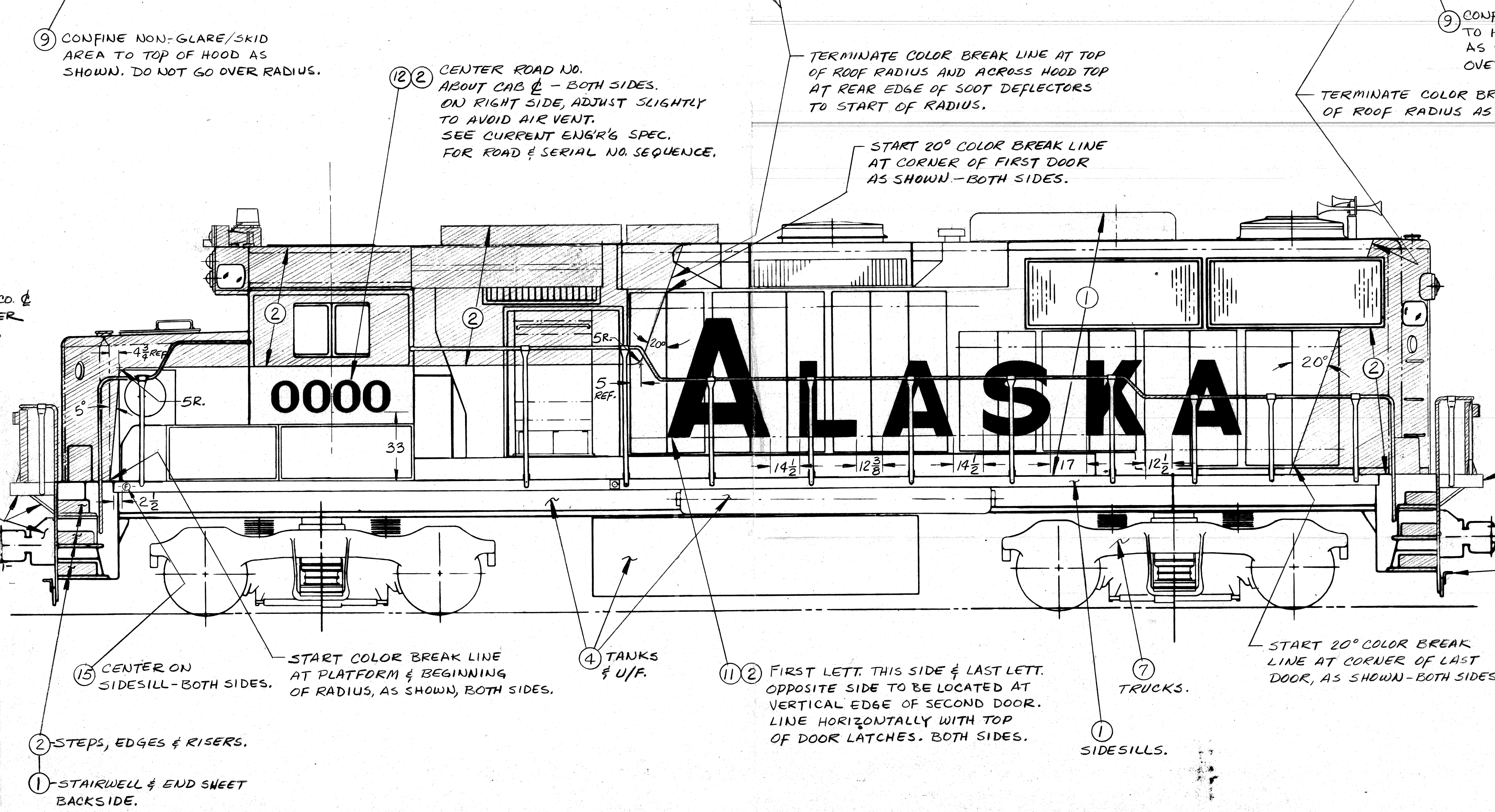
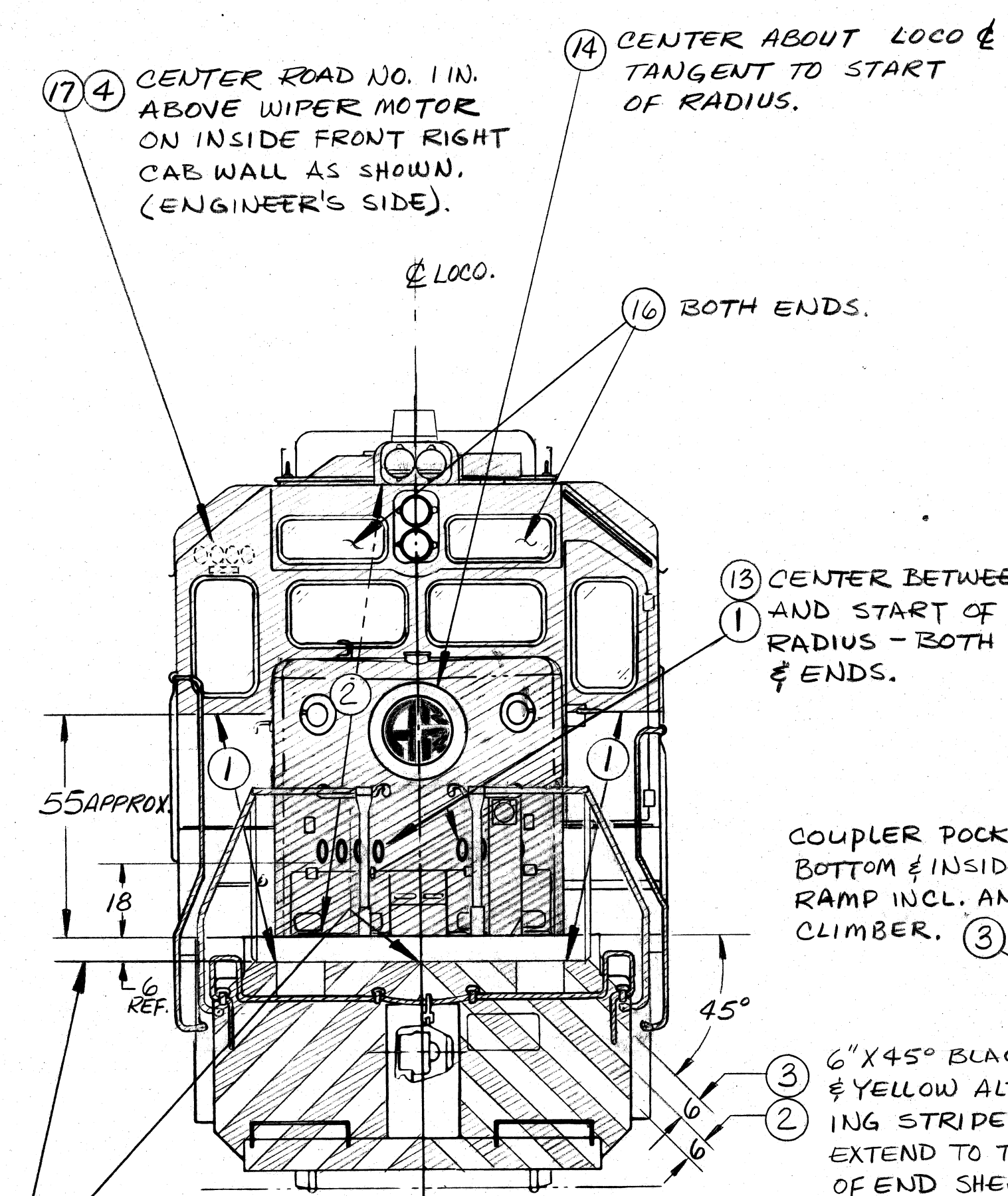
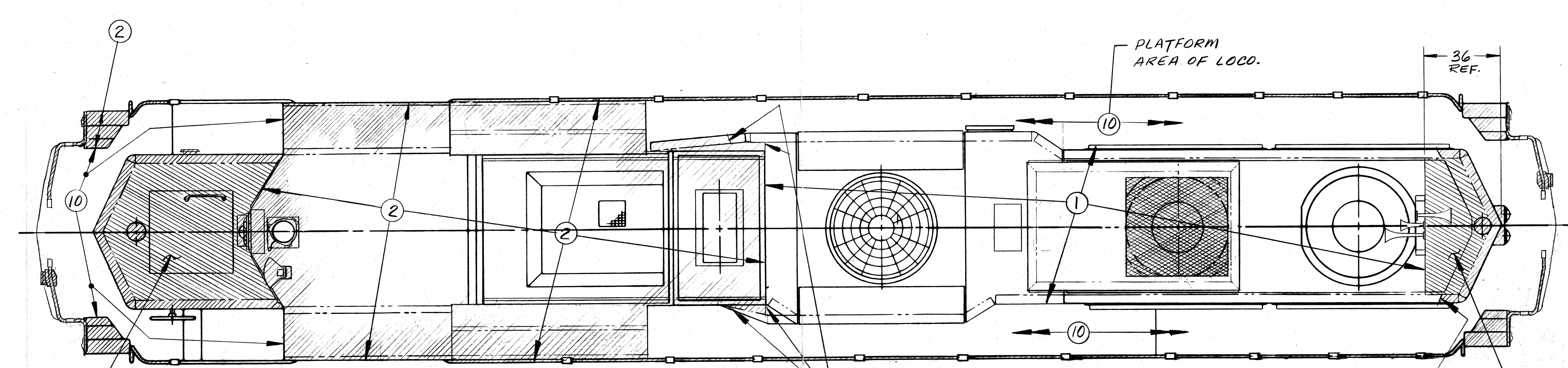
SURFACE FINISH SPEC. IS IN ACCORDANCE WITH S.W. ENGR. STD.

THIRD ANGLE PROJECTION

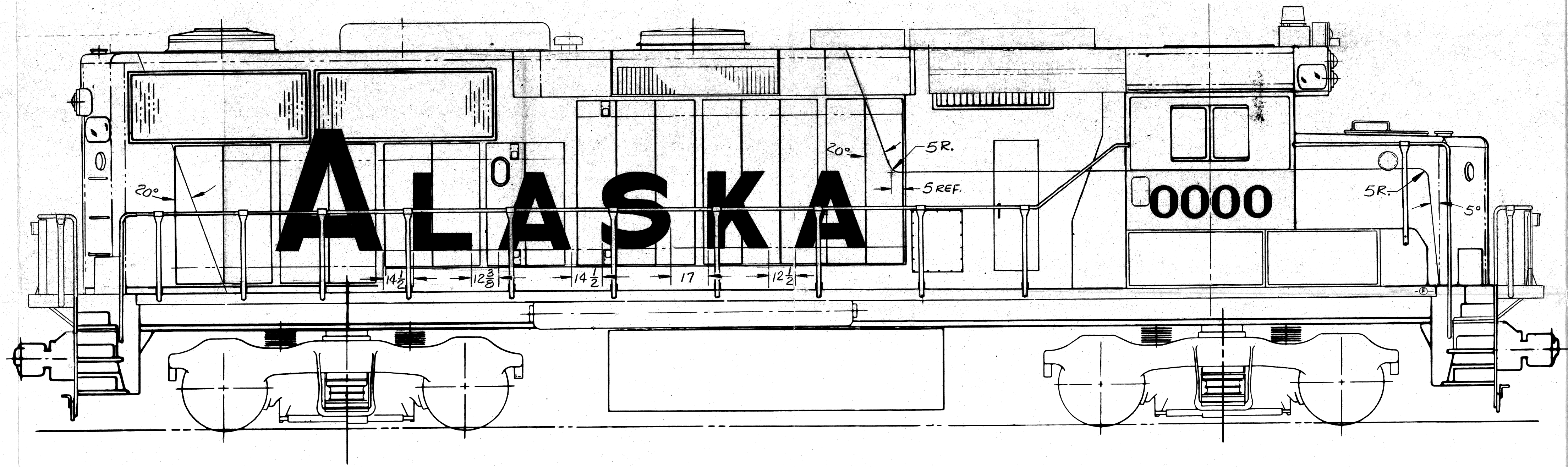
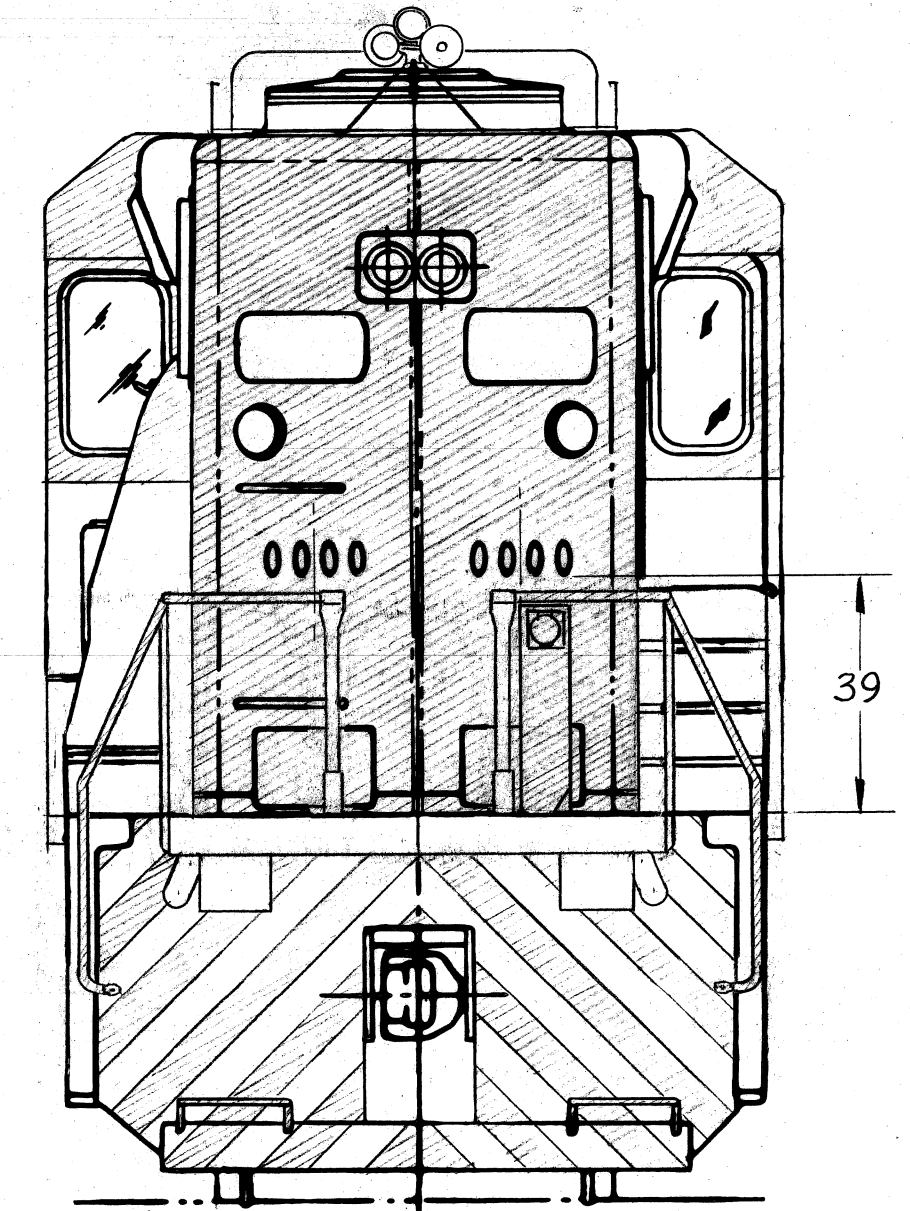
**PAINT SHOP-CUSTOMER NOTE:**

- USE ALL APPROX. DIMENSIONS AS INDICATED. IF APPLICATION OF A DETAIL CAN BE IMPROVED BY ADJUSTMENT, ADJUST DETAIL ± 1/2 INCHES MAXIMUM.
- ALL OTHER DIMENSIONS ARE NOT APPROX. AND SHOULD NOT BE MOVED, UNLESS APPLICATION CAN BE IMPROVED. IF SO CHANGE CANNOT BE MADE WITHOUT CONSULTING THE STYLING DEPARTMENT 893 FOR APPROVAL.
- NO EXTRAS WILL BE SHOWN ON ANY STYLING DRAWING UNLESS IT AFFECTS THE PAINT DESIGN.
- REFER TO A.I. 2320 FOR AUTHORITY.

MATERIALS & DETAILS			
ITEM	EMD PART NO.	COLOR	DESCRIPTION
1	9506077	BLUE	POLYURETHANE
2	9319033	YELLOW	"
3	9094001	BLACK	"
4	8106299	BLACK	ALKYD ENAMEL
5	8220971	JADE GREEN	"
6	8106297	SUEDE GRAY	"
7	8114351	ALUMINUM	"
8	8106365	RED	"
9	9534866	WHITE	NON-SKID
10	8402431	BLACK	"
11	9555056	LETTERS-57 & 36 IN.	
12	9555057	NUMERALS-15 IN.	
13	9555058	NUMERALS-6 IN.	
14	9557005	MEDALLION-NON-RFTV (FURN. BY R.R.)	
15	SEE EDL	LETTER F-ALMAG	
16	SEE EDL	NO. BOX PLATE (8-1/2 IN. NO'S)	
17	9335724	NUMERALS-3 IN.	



- GENERAL NOTES:**
- SEE GENERAL PAINTING INSTRUCTION DRUG. #9321746 FOR LABELS & MISC. ITEMS.
  - PAINT CAB INTERIOR WITH IT. 5 (JADE GREEN).
  - PAINT SHORT/SLONG HOOD INTERIORS PLUS COMPONENTS WITH IT. 6 (SUEDE GRAY).
  - ALL HANDRAILS, LADDERS, GRABIRONS, UNCOUPLING RODS & BRACKETS TO BE IT. 2 (YELLOW).
  - PAINT ALL STANCHIONS WITH IT. 1 (BLUE).
  - PAINT WITH IT. 8 (RED) FUEL FILLER SPOUTS & FUEL SIGHT GLASS HOUSING.
  - PAINT 1/2 INCH YELLOW (IT. 2) STRIPE ACROSS FUEL SIGHT GLASS TO SHOW FULL LEVEL.



REV. NO.	REV. DATE	BY	APPV.	REVISION	DATE	BY	APPV.	REV. NO.	REV. DATE	BY	APPV.	REV. NO.	REV. DATE	BY	APPV.	REV. NO.	REV. DATE	BY	APPV.	

NO. REQ.	MATERIAL	NAME OF PART	PART NO.	QUANTITY
		ELECTRO-MOTIVE DIVISION GENERAL MOTORS CORPORATION LA GRANGE, ILLINOIS, U.S.A.		
		<b>STYLING - GP49</b>		
		REVISED ON	REV. NO.	PART NO.
		837049		9555055